

Income and Prices



Income levels in Westchester's municipalities are quite heterogeneous and represent a wide range of economic groups. Median household income ranges from \$41,128 to \$182,792 among the cities, towns and villages according to the 2000 US Census. The 2000 Census median household income for the Westchester County as a whole was \$63,582.

Estimates of income can vary based on methodology and assumptions, such as the unit of measurement (family, household, etc.), sources of income, and the definition of income itself. Compared to surrounding counties, per capita personal income was \$55,222 in 2002 and exceeded most other areas except for Manhattan and Fairfield, Ct. The annual change in per capita income was 4.4%, exceeded in the region only by the increase of Manhattan. Among all counties in the United States, Westchester County has the sixth highest per capita income which is 75% higher than the national average income per capita.

In recent years, inflation has moderated to the 2.0% to 3.1% range. This compares to 5.5% to 6.0% experienced in the early 1990s in the New York - New Jersey metropolitan region.

Average wages for jobs in Westchester are closer to New York State average wages than to other counties in the Hudson Valley Region. For average annual wages by industry please see the County Business Patterns table on page 65 in the *Labor Force Chapter*.

Households by Income and Range and Median Household Income, 1999 Westchester County, NY

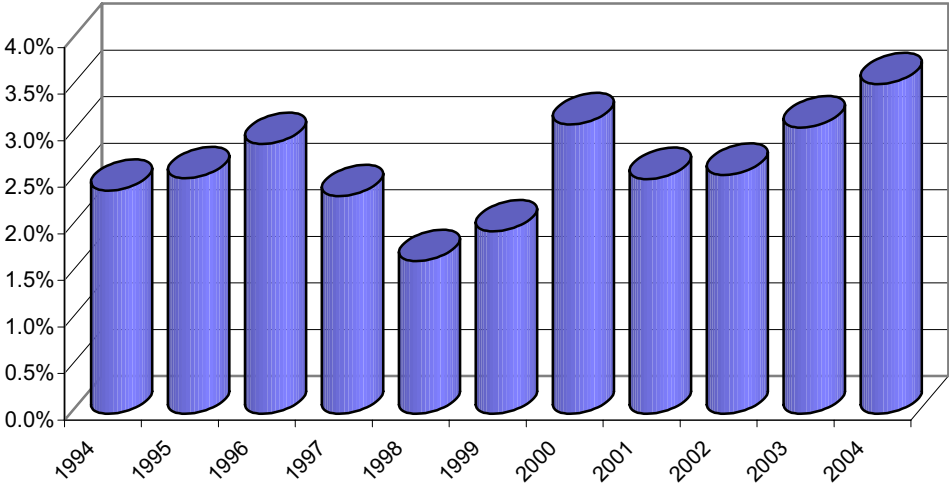
Municipality		Total Households	Less Than \$10,000	\$10,000 to \$14,999	\$15,000 to \$24,999	\$25,000 to \$34,999	\$35,000 to \$49,999	\$50,000 to \$74,999	\$75,000 to \$99,999	\$100,000 to \$149,999	\$150,000 to \$199,999	\$200,000 or More	Median Household Income
Westchester County		337,486	24,492	14,518	27,654	28,000	39,970	56,607	41,497	48,193	21,507	35,048	\$63,582
Cities		161,336	17,331	9,588	16,793	16,529	21,881	28,681	18,658	18,033	5,965	7,877	\$48,733
Towns		98,105	3,024	2,367	5,150	5,588	9,255	15,114	13,385	18,532	9,706	15,984	\$89,150
Villages		78,045	4,137	2,563	5,711	5,883	8,834	12,812	9,454	11,628	5,836	11,187	\$73,210
North		91,367	3,699	2,606	5,647	6,015	9,308	14,718	12,341	16,381	8,233	12,419	\$81,269
Central		83,952	4,577	2,879	6,223	6,337	9,543	13,915	10,445	12,740	6,164	11,129	\$72,309
South		162,167	16,216	9,033	15,784	15,648	21,119	27,974	18,711	19,072	7,110	11,500	\$52,934
CITIES	Mount Vernon	25,722	3,064	1,745	3,048	3,202	3,871	4,737	2,507	2,441	713	394	\$41,128
	New Rochelle	26,235	2,406	1,538	2,387	2,180	3,266	4,412	3,114	3,218	1,499	2,215	\$55,513
	Peekskill	8,695	845	451	950	971	1,306	1,802	1,109	870	242	149	\$47,177
	Rye City	5,375	158	84	236	225	479	529	691	937	370	1,666	\$110,894
	White Plains	20,951	1,682	977	1,860	1,923	2,714	3,754	2,484	2,854	1,075	1,628	\$58,545
	Yonkers	74,358	9,176	4,793	8,312	8,028	10,245	13,447	8,753	7,713	2,066	1,825	\$44,663
TOWNS	Bedford	5,763	152	155	300	298	441	858	676	984	551	1,348	\$100,076
	Cortlandt	9,898	472	284	604	723	1,049	1,848	1,489	1,956	786	687	\$74,581
	Eastchester	7,662	358	184	406	650	817	1,410	1,086	1,392	607	752	\$75,138
	Greenburgh	16,092	519	369	894	1,037	1,605	2,683	2,292	2,992	1,551	2,150	\$85,242
	Harrison	8,389	384	295	533	537	916	1,303	1,049	1,277	590	1,505	\$80,398
	Lewisboro	4,224	65	37	103	136	329	523	636	806	515	1,074	\$117,556
	Mamaroneck	4,192	110	106	193	182	366	501	409	580	457	1,288	\$119,741
	Mount Pleasant	7,755	204	143	383	464	763	1,248	1,043	1,633	748	1,126	\$91,119
	New Castle	5,753	64	65	166	135	270	523	520	913	851	2,246	\$162,955
	North Castle	3,588	58	53	164	115	254	518	397	518	413	1,098	\$122,683
	North Salem	1,780	30	27	66	147	114	236	266	517	170	207	\$100,387
	Ossining	1,930	22	15	105	71	231	293	223	461	229	280	\$100,542
	Pound Ridge	1,703	16	25	35	24	80	180	179	291	237	636	\$154,536
	Somers	6,808	117	169	366	348	725	1,157	916	1,570	709	731	\$89,247
Yorktown	12,568	453	440	832	721	1,295	1,833	2,204	2,642	1,292	856	\$83,054	
VILLAGES	Ardsley	1,432	25	23	42	55	94	232	195	344	168	254	\$105,293
	Briarcliff Manor	2,425	89	56	97	72	92	267	241	417	368	726	\$133,272
	Bronxville	2,315	56	43	110	86	129	193	170	392	210	926	\$144,940
	Buchanan	809	32	16	71	85	83	202	120	111	57	32	\$62,604
	Croton-on-Hudson	2,801	58	68	133	170	314	511	372	637	255	283	\$84,744
	Dobbs Ferry	3,814	111	111	386	347	411	639	465	591	422	331	\$70,333
	Elmsford	1,612	85	59	125	141	243	291	248	242	113	65	\$61,685
	Hastings-on-Hudson	3,090	110	96	177	172	297	553	423	471	353	438	\$83,188
	Irvington	2,509	86	72	103	126	200	391	327	423	229	552	\$96,467
	Larchmont	2,433	58	71	121	105	145	350	201	383	234	765	\$123,238
	Mamaroneck	7,097	509	250	546	566	925	1,385	837	971	446	662	\$62,510
	Mount Kisco	3,995	336	136	350	364	559	770	549	466	182	283	\$55,420
	Ossining	8,219	597	405	778	894	1,182	1,584	1,032	1,032	375	340	\$52,185
	Pelham	2,280	69	87	103	201	269	301	358	349	186	357	\$82,430
	Pelham Manor	1,861	43	32	96	87	161	230	187	285	207	533	\$112,553
	Pleasantville	2,653	89	61	144	277	221	365	369	557	253	317	\$86,632
	Port Chester	9,553	1,010	477	1,106	1,068	1,491	1,791	1,099	981	307	223	\$45,381
	Rye Brook	3,149	55	83	172	111	267	496	404	619	294	648	\$98,864
	Scarsdale	5,648	84	51	157	136	174	433	443	854	656	2,660	\$182,792
	Sleepy Hollow	3,174	182	142	400	250	479	540	385	461	93	242	\$54,201
Tarrytown	4,539	244	124	268	434	652	809	631	631	313	433	\$68,762	
Tuckahoe	2,637	209	100	226	136	446	479	398	411	115	117	\$60,744	

Source: 2000 US Census Bureau. Prepared by the Westchester County Department of Planning.

Consumer Price Index
Regional Cost of Living, 1994 to 2004
for New York, New Jersey and
the Connecticut Metropolitan Area

Year	CPI 1982-84=100	Annual Percentage Change
1994	158.2	2.4%
1995	162.2	2.5%
1996	166.9	2.9%
1997	170.8	2.3%
1998	173.6	1.6%
1999	177	2.0%
2000	182.5	3.1%
2001	187.1	2.5%
2002	191.9	2.6%
2003	197.8	3.1%
2004	204.8	3.5%

Cost of Living
Annual Percent Change, 1994 to 2004



Source: US Dept. of Labor, Bureau of Labor Statistics. Prepared by the Westchester County Department of Planning.
<http://www.bls.gov/cpi/>
(Provides cost of living comparisons for 400 US metropolitan areas)

Source of Income, 2000 to 2003
Westchester County, NY
(in thousands of dollars)

Item	2000	2001	2002	2003
Personal income	50,992,338	52,394,394	51,447,378	52,254,411
Nonfarm personal income 1/	50,989,510	52,391,634	51,444,142	52,251,144
Farm income 2/	2,828	2,760	3,236	3,267
Population (persons) 3/	926,029	933,241	937,892	940,561
Per capita personal income (dollars) 4/	55,066	56,142	54,854	55,557
Earnings by place of work	27,264,893	29,324,304	29,699,332	30,782,145
<i>Less: Contributions for government social insurance 5/</i>	<i>2,912,446</i>	<i>3,142,405</i>	<i>3,220,456</i>	<i>3,333,791</i>
Employee and self-employed contributions for government social insurance	1,431,470	1,556,660	1,596,893	1,646,754
Employer contributions for government social insurance	1,480,976	1,585,745	1,623,563	1,687,037
<i>Plus: Adjustment for residence 6/</i>	<i>10,909,692</i>	<i>10,341,647</i>	<i>9,407,397</i>	<i>9,226,990</i>
Equals: Net earnings by place of residence	35,262,139	36,523,546	35,886,273	36,675,344
Plus: Dividends, interest, and rent 7/	11,127,190	10,945,605	10,287,732	10,139,193
Plus: Personal current transfer receipts	4,603,009	4,925,243	5,273,373	5,439,874
Wage and salary disbursements	19,764,558	20,978,179	20,934,281	21,431,069
Supplements to wages and salaries	3,564,866	3,828,681	4,138,203	4,439,699
Employer contributions for employee pension & insurance	2,083,890	2,242,936	2,514,640	2,752,662
Employer contributions for government social insurance	1,480,976	1,585,745	1,623,563	1,687,037
Proprietors' income 8/	3,935,469	4,517,444	4,626,848	4,911,377
Farm proprietors' income	769	679	1,036	571
Nonfarm proprietors' income	3,934,700	4,516,765	4,625,812	4,910,806
Total employment	526,998	535,634	538,000	540,201
Wage and salary employment	435,866	438,092	436,895	435,874
Proprietors employment	91,132	97,542	101,105	104,327

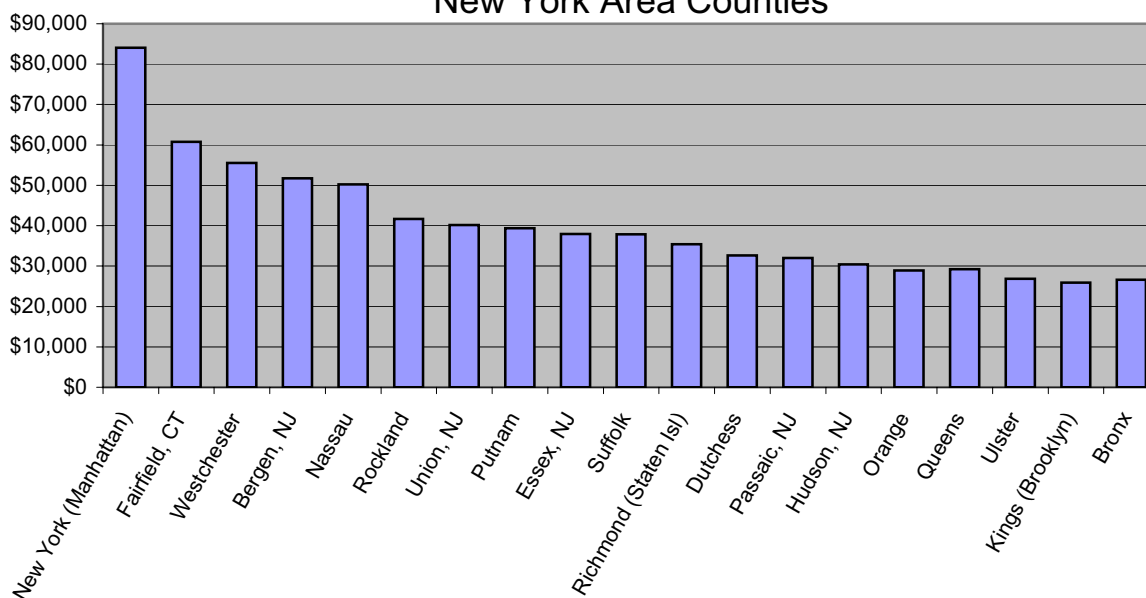
Source: US Bureau of Economic Analysis. Prepared by the Westchester County Department of Planning.

1. Nonfarm personal income is total personal income less farm income.
2. Farm income is farm earnings less farm employer contributions for government social insurance.
3. Midyear population estimates of the Bureau of the Census.
4. Per capita personal income is total personal income divided by total midyear population.
5. Contributions for government social insurance are included in earnings by type and industry, but they are excluded from personal income.
6. The adjustment for residence is the net inflow of the earnings of interarea commuters. For the United States, it consists of adjustments for border workers: wage and salary disbursements to U.S. residents commuting to Canada less wage and salary disbursements to Canadian and Mexican residents commuting into the United States.
7. Rental income of persons includes the capital consumption adjustment.
8. Proprietors' income includes the inventory valuation adjustment and the capital consumption adjustment.

Personal Income Per Capita, 1998 to 2003 New York Area County Comparisons

County	1998	1999	2000	2001	2002	2003	1998 to 2003 Percent Change
New York (Manhattan)	\$76,450	\$79,631	\$85,789	\$87,098	\$84,591	\$84,044	36%
Fairfield, CT	\$51,811	\$54,120	\$58,998	\$61,130	\$59,727	\$60,803	45%
Westchester	\$49,425	\$52,171	\$55,072	\$56,070	\$55,522	\$55,557	40%
Bergen, NJ	\$45,798	\$46,893	\$51,234	\$52,607	\$52,867	\$51,758	33%
Nassau	\$43,580	\$44,729	\$47,449	\$49,422	\$49,543	\$50,242	38%
Rockland	\$36,984	\$38,396	\$41,150	\$40,865	\$41,311	\$41,661	34%
Union, NJ	\$35,122	\$35,633	\$39,661	\$39,715	\$39,889	\$40,181	36%
Putnam	\$34,539	\$36,487	\$38,884	\$39,551	\$39,434	\$39,410	35%
Essex, NJ	\$32,565	\$33,626	\$37,045	\$37,935	\$38,312	\$37,963	34%
Suffolk	\$32,709	\$34,368	\$37,140	\$37,377	\$37,650	\$37,901	36%
Richmond (Staten Isl)	\$30,484	\$32,044	\$34,194	\$35,183	\$34,980	\$35,443	32%
Dutchess	\$28,284	\$29,517	\$31,540	\$32,586	\$32,604	\$32,635	34%
Passaic, NJ	\$27,307	\$28,327	\$30,463	\$30,803	\$31,323	\$32,003	33%
Hudson, NJ	\$25,563	\$26,721	\$28,936	\$29,868	\$30,259	\$30,447	37%
Orange	\$25,305	\$26,432	\$27,755	\$28,600	\$29,013	\$28,903	31%
Queens	\$25,365	\$26,206	\$27,926	\$28,389	\$28,877	\$29,227	25%
Ulster	\$23,229	\$24,146	\$25,553	\$26,401	\$27,013	\$26,871	34%
Kings (Brooklyn)	\$22,108	\$23,304	\$24,519	\$24,704	\$25,138	\$25,934	30%
Bronx	\$17,797	\$18,372	\$19,350	\$20,400	\$20,950	\$26,611	60%

Per Capita Income, 2003 New York Area Counties



Note: Personal income includes income from all sources: wages and salaries, other labor income, proprietors' income, rental income, dividend income and transfer payments less contributions for social security.

Source: US Department of Commerce, Bureau of Economic Analysis.

Prepared by the Westchester County Department of Planning.

Average Annual Expenditures, 2002-2003 Selected Metropolitan Areas

Item	New York	Philadelphia	Boston	Los Angeles	San Francisco	Washington DC	Chicago
Number of consumer units	7,446,000	2,404,000	2,605,000	5,169,000	2,770,000	2,090,000	3,097,000
Consumer unit characteristics:							
Income before taxes*	\$66,643	\$59,006	\$59,648	\$56,275	\$74,377	\$73,732	\$64,670
Age of reference person	49.2	49.9	47.8	47.4	48	45.9	47.7
Average number in consumer unit:							
Persons	2.7	2.6	2.3	2.8	2.6	2.6	2.8
Children under 18	0.7	0.7	0.6	0.8	0.7	0.7	0.8
Persons 65 and over	0.3	0.3	0.3	0.3	0.2	0.2	0.2
Earners	1.4	1.3	1.3	1.5	1.4	1.6	1.5
Vehicles	1.4	1.7	1.6	1.9	1.9	1.8	1.7
Percent Homeowner	56	74	62	56	63	71	69
Average annual expenditures	\$50,319	\$40,986	\$41,814	\$49,765	\$53,135	\$50,985	\$47,016
Food	7,005	4,862	5,627	6,402	6,551	6,288	6,001
Food at home	3,808	2,630	3,303	3,506	3,628	3,180	3,418
Cereals and bakery products	570	411	495	481	492	446	472
Meats, poultry, fish, and eggs	1,079	711	897	875	887	806	875
Dairy products	396	280	356	375	359	320	354
Fruits and vegetables	732	470	562	737	780	633	624
Other food at home	1,031	758	994	1,039	1,109	974	1,093
Food away from home	3,197	2,232	2,324	2,895	2,923	3,109	2,583
Housing	18,919	14,780	15,211	17,986	20,349	18,863	17,059
Shelter	12,402	8,843	10,145	11,852	14,552	12,189	10,290
Owned dwellings	7,640	6,522	6,318	7,218	9,322	8,641	7,333
Rented dwellings	4,066	1,867	3,203	4,089	4,580	2,958	2,344
Other lodging	696	454	623	544	649	589	612
Utilities, fuels, and public services	3,055	3,105	2,676	2,568	2,566	3,067	3,190
Household operations	1,113	789	772	947	1,208	932	876
Housekeeping supplies	553	517	407	585	514	648	624
Household furnishings and equipment	1,796	1,527	1,212	2,035	1,510	2,028	2,080
Apparel and Services	2,638	2,106	1,610	2,246	2,196	2,240	2,017
Transportation	7,729	6,510	7,175	9,162	8,802	7,853	7,961
Vehicle purchases (net outlay)	2,928	2,399	3,518	4,019	3,776	3,374	3,570
Gasoline and motor oil	1,101	1,142	1,159	1,580	1,455	1,318	1,325
Other vehicle expenses	2,658	2,596	2,074	3,070	2,870	2,454	2,410
Public transportation	1,042	374	424	493	701	707	657
Health Care	2,235	2,138	2,007	2,196	2,580	2,289	2,462
Entertainment	2,350	2,031	2,019	2,386	2,273	2,340	2,326
Personal care products and services	643	567	496	755	595	651	588
Reading	166	132	163	152	207	164	138
Education	1,260	834	1,118	899	933	1,219	1,224
Tobacco products and smoking supplies	266	289	273	194	223	184	300
Alcoholic beverages	469	448	504	467	607	641	486
Miscellaneous	771	682	473	911	774	732	945
Cash contributions	949	1,050	1,016	1,426	1,218	1,474	1,431
Personal insurance and pensions	4,918	4,556	4,121	4,582	5,825	6,046	4,077
Life and other personal insurance	531	461	235	340	470	537	324
Pensions and Social Security	4,388	4,095	3,886	4,243	5,355	5,509	3,754

Source: US Bureau of Labor Statistics Prepared by the Westchester County Department of Planning

* Components of income and taxes are derived from "complete income reporters" only

Persons in Poverty by Age, 1999 Westchester County, NY

Municipal Name		Population for whom Poverty is Determined	Persons Below the Poverty Level				Percent of Age Group Below Poverty			
			Persons Below Poverty Level	Percent Persons Below Poverty	Under 18	18 to 64	65 and Over	Under 18	18 to 64	65 and Over
Westchester County		902,177	78,967	9%	25,417	44,290	9,260	11%	8%	8%
Cities		420,787	55,607	13%	19,391	30,358	5,858	19%	12%	10%
Towns		369,533	46,782	13%	16,448	25,563	4,771	18%	11%	9%
Villages		327,225	40,776	12%	14,671	22,153	3,952	18%	11%	9%
CITIES	Mount Vernon	67,497	9,618	14%	3,170	5,299	1,149	19%	13%	14%
	New Rochelle	70,294	7,367	10%	2,101	4,241	1,025	12%	10%	10%
	Peekskill	22,276	3,042	14%	981	1,851	210	18%	13%	8%
	Rye	14,955	374	3%	78	195	101	2%	2%	5%
	White Plains	51,973	5,117	10%	1,400	3,195	522	13%	9%	7%
	Yonkers	193,792	30,089	16%	11,661	15,577	2,851	25%	13%	10%
TOWNS	Bedford	16,243	793	5%	227	504	62	5%	5%	3%
	Cortlandt	27,986	1,361	5%	324	831	206	4%	5%	6%
	Eastchester	18,552	675	4%	138	359	178	3%	3%	5%
	Greenburgh	41,719	1,327	3%	271	764	292	3%	3%	5%
	Harrison	22,872	1,277	6%	315	687	275	5%	5%	8%
	Lewisboro	12,324	229	2%	49	156	24	1%	2%	3%
	Mamaroneck	11,130	277	2%	56	168	53	2%	3%	3%
	Mount Pleasant	23,270	992	4%	243	696	53	4%	5%	2%
	New Castle	17,390	601	3%	252	292	57	5%	3%	4%
	North Castle	10,833	325	3%	54	232	39	2%	4%	3%
	North Salem	4,926	100	2%	31	69	na	2%	2%	na
	Ossining	5,163	329	6%	na	212	117	na	6%	17%
	Pound Ridge	4,718	80	2%	7	57	16	1%	2%	3%
	Somers	17,916	367	2%	75	220	72	2%	2%	2%
Yorktown	35,565	1,021	3%	357	473	191	4%	2%	4%	
VILLAGES	Ardsey	4,237	53	1%	11	18	24	1%	1%	4%
	Briarcliff Manor	6,852	172	3%	23	103	46	1%	3%	5%
	Bronxville	6,284	171	3%	39	109	23	2%	3%	3%
	Buchanan	2,185	85	4%	33	47	5	6%	3%	2%
	Croton-on-Hudson	7,408	249	3%	66	173	10	3%	4%	1%
	Dobbs Ferry	9,923	555	6%	190	252	113	8%	4%	7%
	Elmsford	4,615	427	9%	137	229	61	13%	8%	12%
	Hastings-on-Hudson	7,641	266	3%	60	184	22	3%	4%	2%
	Irvington	6,583	201	3%	32	161	8	2%	4%	1%
	Larchmont	6,455	148	2%	28	79	41	1%	2%	5%
	Mamaroneck	18,464	1,267	7%	291	728	248	7%	6%	9%
	Mount Kisco/	9,925	1,040	10%	239	634	167	11%	10%	14%
	Ossining	21,455	2,270	11%	649	1,422	199	13%	10%	8%
	Pelham Manor	5,457	232	4%	94	118	20	6%	4%	3%
	Pelham	6,404	209	3%	50	132	27	3%	3%	4%
	Pleasantville	6,919	301	4%	55	213	33	3%	5%	3%
	Port Chester	27,573	3,591	13%	969	2,189	433	16%	12%	13%
	Rye Brook	8,561	251	3%	22	209	20	1%	4%	1%
	Scarsdale/	17,823	496	3%	188	260	48	3%	3%	2%
	Sleepy Hollow	9,201	678	7%	225	376	77	10%	6%	8%
Tarry	10,607	495	5%	117	306	72	5%	4%	5%	
Tuckahoe	6,211	449	7%	109	270	70	8%	7%	9%	

Source: US Census Bureau, 2000. Prepared by the Westchester County Department of Planning.

Poverty Status of Families by Presence and Age of Children, 2000 Westchester County, NY

		Total Families For Whom Poverty was Determined	Income in 1999 below poverty level:						
			Income in 1999 below poverty level:	Percent Below Poverty					No related children under 18 years
				Total Families	With related children under 18 years:	Under 5 years only	Under 5 years and 5 to 17 years	5 to 17 years only	
Westchester County		237,010	15,173	6.4%	4.9%	1.0%	1.5%	2.5%	1.5%
Cities		106,285	11,289	10.6%	8.4%	1.6%	2.6%	4.2%	2.2%
Towns		75,312	1,613	2.1%	1.5%	0.2%	0.4%	0.8%	0.7%
Villages		55,413	2,271	4.1%	3.0%	0.6%	0.9%	1.5%	1.1%
North		68,901	2,183	3.2%	2.4%	0.5%	0.8%	1.2%	0.8%
Central		58,499	2,485	4.2%	3.1%	0.6%	0.9%	1.6%	1.1%
South		109,610	10,505	9.6%	7.5%	1.4%	2.3%	3.8%	2.1%
CITIES	Mount Vernon	16,826	1,983	11.8%	8.9%	1.8%	2.6%	4.5%	2.9%
	New Rochelle	17,683	1,402	7.9%	6.2%	1.2%	1.9%	3.1%	1.7%
	Peekskill	5,402	559	10.3%	8.6%	2.5%	3.2%	3.0%	1.7%
	Rye	4,046	63	1.6%	1.0%	0.0%	0.5%	0.5%	0.5%
	White Plains	12,800	832	6.5%	5.2%	0.9%	1.6%	2.8%	1.3%
	Yonkers	49,528	6,450	13.0%	10.5%	2.0%	3.2%	5.3%	2.6%
TOWNS	Bedford	4,414	104	2.4%	2.4%	0.7%	1.0%	0.7%	0.0%
	Cortlandt	7,519	242	3.2%	1.8%	0.3%	0.4%	1.1%	1.4%
	Eastchester	5,165	130	2.5%	1.7%	0.6%	0.4%	0.7%	0.9%
	Greenburgh	11,529	241	2.1%	1.2%	0.3%	0.4%	0.6%	0.9%
	Harrison	6,302	264	4.2%	2.7%	0.6%	0.1%	1.9%	1.5%
	Lewisboro	3,468	47	1.4%	0.8%	0.0%	0.0%	0.8%	0.5%
	Mamaroneck	3,223	51	1.6%	1.3%	0.0%	0.3%	1.0%	0.2%
	Mount Pleasant	6,363	108	1.7%	1.5%	0.2%	0.5%	0.8%	0.2%
	New Castle	4,978	101	2.0%	1.6%	0.2%	1.0%	0.4%	0.4%
	North Castle	3,007	29	1.0%	1.0%	0.0%	0.3%	0.7%	0.0%
	North Salem	1,393	21	1.5%	0.9%	0.0%	0.0%	0.9%	0.6%
	Ossining	1,413	9	0.6%	0.0%	0.0%	0.0%	0.0%	0.6%
	Pound Ridge	1,417	13	0.9%	0.5%	0.5%	0.0%	0.0%	0.4%
	Somers	5,197	60	1.2%	0.5%	0.0%	0.3%	0.3%	0.6%
Yorktown	9,924	193	1.9%	1.6%	0.0%	0.7%	0.9%	0.3%	
VILLAGES	Ardasley	1,212	5	0.4%	0.4%	0.0%	0.0%	0.4%	0.0%
	Briarcliff Manor	1,998	16	0.8%	0.4%	0.0%	0.0%	0.4%	0.4%
	Bronxville	1,654	28	1.7%	1.4%	0.7%	0.4%	0.2%	0.3%
	Buchanan	603	13	2.2%	2.2%	0.0%	0.8%	1.3%	0.0%
	Croton-on-Hudson	2,074	37	1.8%	1.5%	0.3%	0.7%	0.5%	0.3%
	Dobbs Ferry	2,578	47	1.8%	1.6%	0.0%	0.7%	0.9%	0.3%
	Elmsford	1,180	79	6.7%	4.4%	1.1%	1.6%	1.7%	2.3%
	Hastings-on-Hudson	2,096	32	1.5%	0.9%	0.2%	0.0%	0.7%	0.7%
	Irvington	1,818	21	1.2%	0.0%	0.0%	0.0%	0.0%	1.2%
	Larchmont	1,721	27	1.6%	1.1%	0.5%	0.0%	0.6%	0.5%
	Mamaroneck	4,942	208	4.2%	2.7%	0.6%	1.1%	1.0%	1.5%
	Mount Kisco	2,493	185	7.4%	4.9%	0.8%	0.9%	3.1%	2.6%
	Ossining	5,373	408	7.6%	5.8%	1.1%	1.5%	3.1%	1.8%
	Pelham Manor	1,499	47	3.1%	2.4%	0.0%	0.5%	1.9%	0.7%
	Pelham	1,688	22	1.3%	1.3%	0.0%	0.5%	0.8%	0.0%
	Pleasantville	1,865	38	2.0%	1.6%	0.8%	0.0%	0.8%	0.5%
	Port Chester	6,519	660	10.1%	7.5%	1.6%	2.4%	3.5%	2.7%
	Rye Brook	2,440	43	1.8%	0.7%	0.2%	0.0%	0.5%	1.1%
	Scarsdale	4,976	84	1.7%	1.7%	0.2%	0.6%	0.9%	0.0%
	Sleepy Hollow	2,244	127	5.7%	4.1%	1.0%	2.0%	1.1%	1.5%
Tarry	2,805	50	1.8%	1.8%	0.6%	0.4%	0.9%	0.0%	
Tuckahoe	1,635	94	5.7%	3.7%	1.3%	0.7%	1.7%	2.1%	

Source: US Census Bureau, 2000. Prepared by the Westchester County Department of Planning.