

# *Population*

---

In 2006, Westchester's population was estimated to be 949,355 according to the US Census Bureau's American Community Survey. Since the 2000 Census, Westchester's population has increased by 25,896 people or 2.8 percent, and the County's population has increased by 8.5 percent (74,489 persons) in the sixteen years since the 1990 Census.

## **Population Estimates and the American Community Survey**

The Census Bureau uses a variety of means to collect data on the population of the United States. The Decennial Census, taken once every ten years, fulfills the Census Bureau's Constitutional mandate of counting the entire population for the purposes of apportioning congressional representation. The Decennial Census, in addition to counting individuals, provides basic information about the population's sex, age, race, and family status. The next Census of the U.S. population will occur in 2010.

The Decennial Census is the most complete count of the population available today. Much of the data is collected via a mail-in form distributed to every housing unit in the nation. Responses to the form are also solicited via telephone and in-person visits to housing units by Census personnel. Despite the Census Bureau's best efforts, error in the Decennial Census is the result of undercount, or the Census Bureau's inability to reach every individual living in the United States. To address the issue of undercount, the Census Bureau uses imputation methods to adjust the data for persons likely missed by the official count.

Although the Census Bureau's Constitutional mandate is to count the population for congressional districting, information collected by the Bureau is used by federal, state and local governments to plan and provide programs and services for residents. To do so, the Bureau relies on sample survey techniques to produce the American Community Survey (ACS).

In 2005, the Census Bureau began compiling and publishing the ACS on an annual basis to provide more information with greater frequency on various facets of the nation's social, housing, and economic makeup. Approximately 3 million people per year are surveyed during the data collection process. The Census Bureau also conducts an annual Population Estimates Program using a multi-faceted methodology to impute population change.

While sample survey data from ACS and the Population Estimates Program is useful, there is a 10 percent chance that the true statistic lies outside the Bureau's margin of error. Additionally, the Population Estimates Program formula uses a variety of factors on a national scale that may not be relevant at the county or local level. For the example, the Population Estimates program uses a nationwide housing demolition factor to estimate population change. While demolition

of older homes may occur in other parts of the nation, Westchester County's older housing remains in excellent and habitable condition. Use of the Population Estimates Program should be done with caution and cross-referenced against other population data sources.

While the 2008 Databook presents only the data available from the most recent 100-percent population count (2000), ACS data and annual Population Estimates are available from the Census Bureau's information gateway at <http://factfinder.census.gov>.

### **Characteristics by Age, Race, Hispanic Origin and Ancestry**

Figures from the 2000 US Census show that Hispanics and other immigrants account for much of the recent population increase. The data also show that while growth is slowing in suburban areas, population in urban centers is increasing, reversing earlier trends.

In 2000, Hispanics were the fastest growing group of immigrants, with 144,124 residents. Hispanics now account for 15.6 percent of the county's total population compared to 9.9 percent in 1990. The Asian population also grew by 27 percent between 1990 and 2000. There are now 41,367 Asian residents who make up 3.7 percent of the county's total population.

African-Americans increased from 114,652 in 1990 to 131,132 in 2000. They now account for 14.2 percent of the county's total population compared to 13.1 percent in 1990. By contrast, the number of residents identifying themselves as white dropped by 35,450 to 658,858. While they remain the largest group in Westchester, white persons now account for 71.3 percent of the total compared to 79.4 percent in 1990.

The drop in the white population may be partly attributed to the new option in the Census 2000 questionnaire that allowed persons to identify themselves using 63 possible combinations of the five racial categories. Some of the 28,161 persons who identified themselves as being of two or more races may have responded as being white if the questionnaire did not allow this option.

The Census also showed that Westchester's urban areas are growing more quickly than suburban areas. Westchester's largest city, Yonkers, had the largest population increase between 1990 and 2000 with 8,004 new residents -- a 4.3 percent increase, for a total of 196,086. New Rochelle and White Plains each added approximately 4,000 residents.

The composition of population growth has changed between the 1990s and 2000. Natural increase--the difference between births and deaths--has been relatively stable in recent years. This reflects a leveling off in the annual number of births during the 1990s in contrast to a decade of essentially steady growth during the 1980s. The population growth of recent years has been strongly affected by migration. Westchester County's international migration between 1990 and 1999 amounted to 41,604, which significantly impacted the population dynamics. Among New York State's 62 counties, Westchester ranks fifth by population change due to international migration.

The prime working age population showed a moderate 1.4 percent increase since 1990. The non-working age population has grown more significantly between the 1990 Census and 2000.

The under 20 year old population increased 18 percent and the 65 and older group grew 2 percent during that time. However, population projections for the year 2030 show that the 60 and over population will increase by 45% from 2000.

More detailed Census information for Westchester County can be obtained by visiting the Census Bureau's information gateway at <http://factfinder.census.gov/> or the Westchester County Department of Planning's website at <http://www.westchestergov.com/planning/research/default.htm>.

**Population, 1900-2000  
Westchester County, NY**

		1900	1910	1920	1930	1940	1950	1960	1970	1980	1990	2000
<b>Westchester County</b>		184,257	283,055	344,436	520,947	573,558	625,816	808,891	894,104	866,599	874,866	923,459
<b>Cities</b>	<b>Mount Vernon</b>	21,228	30,919	42,726	61,499	67,362	71,899	76,010	72,778	66,713	67,153	68,381
	<b>New Rochelle</b>	14,720	28,867	36,213	54,000	58,408	59,725	76,812	75,385	70,794	67,265	72,182
	<b>Peekskill</b>	10,358	15,245	15,868	17,125	17,311	17,731	18,737	19,283	18,236	19,536	22,441
	<b>Rye</b>		3,964	5,308	8,712	9,865	11,721	14,225	15,869	15,083	14,936	14,955
	<b>White Plains</b>	8,539	17,090	21,031	35,830	40,327	43,466	50,485	50,125	46,999	48,718	53,077
	<b>Yonkers</b>	47,931	79,803	100,176	134,646	142,598	152,798	190,634	204,297	195,351	188,082	196,086
<b>Towns and Villages</b>	<b>Bedford Town</b>	2,772	4,363	4,020	6,715	6,807	8,471	12,076	15,309	15,137	16,906	18,133
	<b>Cortlandt Town</b>	8,345	7,010	5,155	9,367	11,016	14,146	26,336	34,393	35,705	37,357	38,467
	<i>Buchanan Village</i>				1,346	1,600	1,820	2,019	2,110	2,041	1,970	2,189
	<i>Croton on Hudson Village</i>	1,533	1,806	2,286	2,447	3,843	4,837	6,812	7,523	6,889	7,018	7,606
	<i>Cortlandt TOV</i>	6,812	5,204	2,869	5,574	5,573	7,489	17,505	24,760	26,775	28,369	28,672
	<b>Eastchester Town</b>	3,040	6,422	9,372	20,340	23,492	27,174	33,613	36,660	32,648	30,867	31,318
	<i>Bronxville Village</i>	579	2,863	3,055	6,387	6,888	6,778	6,744	6,674	6,267	6,028	6,543
	<i>Tuckahoe Village</i>		2,722	3,509	6,138	6,563	5,991	6,423	6,236	6,076	6,302	6,211
	<i>Eastchester TOV</i>	2,461	837	2,808	7,815	10,041	14,405	20,446	23,750	20,305	18,537	18,564
	<b>Greenburgh Town</b>	14,894	21,148	23,881	35,821	40,456	47,527	76,213	85,746	82,881	83,816	86,764
	<i>Ardsley Village</i>	404	537	730	1,135	1,423	1,744	3,991	4,470	4,183	4,272	4,269
	<i>Dobbs Ferry Village</i>	2,888	3,455	4,401	5,741	5,883	6,268	9,260	10,353	10,053	9,940	10,622
	<i>Elmsford Village</i>			1,535	2,935	3,078	3,147	3,795	3,911	3,361	3,938	4,676
	<i>Hastings on Hudson Village</i>	2,002	4,552	5,526	7,097	7,057	7,565	8,979	9,479	8,573	8,000	7,648
	<i>Irvington Village</i>	2,231	2,319	2,701	3,067	3,272	3,657	5,494	5,878	5,774	6,348	6,631
	<i>Tarrytown Village</i>	4,770	5,600	5,807	6,841	6,874	8,851	11,109	11,115	10,648	10,739	11,090
	<i>Greenburgh TOV</i>	2,599	4,685	3,181	9,005	12,869	16,295	33,585	40,540	40,289	40,579	41,828
	<b>Harrison Town</b>	2,048	4,226	5,006	10,195	11,783	13,577	19,201	21,544	23,046	23,308	24,154
	<b>Lewisboro Town</b>	1,311	1,127	1,069	1,427	1,929	2,352	4,165	6,610	8,871	11,313	12,324
	<b>Mamaroneck Town</b>	3,849	5,602	7,801	19,040	22,260	25,108	29,107	31,243	29,017	27,706	28,967
	<i>Larchmont Village</i>	945	1,958	2,468	5,282	5,970	6,330	6,789	7,203	6,308	6,181	6,485
	<i>Mamaroneck Village-part</i>		3,414	3,536	7,110	7,822	8,851	10,555	11,038	10,281	10,294	11,341
	<i>Mamaroneck TOV</i>	2,904	,230	1,797	6,648	8,468	9,927	11,763	13,002	12,428	11,231	11,141
	<b>Mount Kisco Town/Village</b>	1,346	2,802	3,944	5,127	5,941	5,907	6,805	8,172	8,025	9,108	9,983
	<b>Mount Pleasant Town</b>	8,698	11,863	14,004	20,944	24,138	26,022	34,955	36,350	39,298	40,590	43,221
	<i>Briarcliff Manor-part</i>		23	5	340	383	407	535	629	795	604	686
	<i>Sleepy Hollow Village</i>	4,241	5,421	5,927	7,417	8,804	8,740	8,818	8,334	7,994	8,152	9,212
	<i>Pleasantville Village</i>	1,204	2,207	3,590	4,540	4,454	4,861	5,877	7,110	6,749	6,592	7,172
	<i>Mount Pleasant TOV</i>	3,253	4,212	4,482	8,647	10,497	12,014	19,725	22,462	23,760	25,242	26,151
	<b>New Castle Town</b>	2,401	3,573	3,639	6,792	7,903	8,802	14,388	14,642	15,425	16,648	17,491
	<b>North Castle Town</b>	1,471	1,522	1,705	2,540	3,306	3,855	6,797	9,591	9,467	10,061	10,849
	<b>North Salem Town</b>	1,133	1,258	934	1,128	1,194	1,622	2,345	3,828	4,569	4,725	5,173
	<b>Ossining Town</b>	10,895	12,828	12,358	17,724	18,911	20,137	26,199	31,619	30,680	34,124	36,534
	<i>Briarcliff Manor Village-part</i>		927	1,022	1,454	1,447	2,087	4,570	5,892	6,320	6,466	7,010
	<i>Ossining Village</i>	7,939	11,480	10,739	15,241	15,996	16,098	18,662	21,659	20,196	22,582	24,010
	<i>Ossining TOV</i>	2,956	421	597	1,029	1,468	1,952	2,967	4,846	4,164	5,076	5,514
	<b>Pelham Town</b>	1,571	2,998	5,195	11,851	12,272	12,195	13,404	13,933	12,978	11,903	11,866
	<i>Pelham Village</i>	303	681	1,056	2,053	1,918	1,843	1,964	7,260	6,848	6,413	6,400
	<i>Pelham Manor Village</i>		852	1,754	4,908	5,302	5,306	6,114	6,673	6,130	5,490	5,466
	<b>Pound Ridge Town</b>	823	725	515	602	806	1,234	2,573	3,792	4,009	4,550	4,726
	<b>Rye Town</b>	12,861	15,688	20,511	28,783	30,270	32,796	38,147	43,227	38,896	39,524	43,880
	<i>Mamaroneck-part</i>		2,285	3,035	4,656	5,212	6,165	7,118	7,871	7,335	7,031	7,411
<i>Port Chester Village</i>	7,440	12,809	16,573	22,662	23,073	23,970	24,960	25,803	23,565	24,728	27,867	
<i>Rye Brook Village*</i>		594	903	1,465	1,985	2,661	6,069	9,560	7,996	7,765	8,602	
<b>Scarsdale Town/Village</b>	885	1,300	3,506	9,690	12,966	13,156	17,968	19,229	17,650	16,987	17,823	
<b>Somers Town</b>	1,338	1,228	1,117	1,514	2,406	3,159	5,468	9,402	13,133	16,216	18,346	
<b>Yorktown Town</b>	2,421	3,020	1,441	2,724	3,642	4,731	16,453	28,064	31,988	33,467	36,318	

Source: US Census Bureau. Prepared by the Westchester County Department of Planning.

Note: \*Town Outside Village" (TOV) is the town area where there are no villages or cities. Prior to 1990, Rye Brook was the unincorporated area of Rye Town.

**Population Estimates, April 1, 2000 to July 1, 2007**  
**Westchester County, NY**

		April 1, 2000								
Municipality		(Census 2000)	July 1, 2000	July 1, 2001	July 1, 2002	July 1, 2003	July 1, 2004	July 1, 2005	July 1, 2006	July 1, 2007
Westchester County		923,459	926,068	935,095	941,254	943,772	946,577	947,719	949,355	951,325
CITIES	Mount Vernon	68,381	68,498	68,798	68,904	68,729	68,621	68,433	68,395	67,882
	New Rochelle	72,182	72,360	72,644	72,770	73,218	73,401	73,468	73,446	73,260
	Peekskill	22,441	22,548	22,916	23,180	23,560	23,871	24,206	24,601	24,556
	Rye	14,955	14,985	15,077	15,149	15,133	15,130	15,101	15,109	15,242
	White Plains	53,077	53,342	54,273	55,604	56,117	56,719	57,136	57,081	57,398
	Yonkers	196,086	196,328	197,633	198,017	198,163	197,995	197,778	197,852	199,244
TOWNS	Bedford	18,133	18,227	18,461	18,583	18,726	18,653	18,562	18,612	18,580
	Cortlandt	38,467	38,602	39,031	39,239	39,533	39,811	39,915	40,078	40,226
	Eastchester	31,318	31,380	31,546	31,647	31,647	31,651	31,563	31,534	31,581
	Greenburgh	86,764	87,305	88,981	89,684	90,398	90,458	90,273	90,263	90,467
	Harrison	24,154	24,234	24,996	25,332	25,360	25,938	26,253	26,337	26,504
	Lewisboro	12,324	12,367	12,506	12,569	12,577	12,585	12,574	12,576	12,580
	Mamaroneck	28,967	29,017	29,143	29,190	29,180	29,126	29,032	29,057	29,154
	Mount Pleasant	43,221	43,312	43,477	43,756	43,766	44,400	44,539	44,638	44,539
	New Castle	17,491	17,539	17,683	17,765	17,782	17,796	17,760	17,784	17,772
	North Castle	10,849	10,929	11,222	11,449	11,634	11,872	12,082	12,134	12,082
	North Salem	5,173	5,139	5,181	5,198	5,191	5,198	5,188	5,187	5,250
	Ossining	36,534	36,603	36,815	37,149	36,609	36,612	36,600	36,595	36,910
	Pelham	11,866	11,887	11,939	11,953	11,917	11,887	11,845	11,831	11,960
	Pound Ridge	4,726	4,757	4,867	4,931	4,937	4,939	4,934	4,978	4,948
	Rye	43,880	44,029	44,398	44,636	44,796	44,852	44,988	45,089	45,208
	Scarsdale	17,823	17,860	17,964	18,027	18,009	17,964	17,893	17,886	17,751
	Somers	18,346	18,401	18,787	19,221	19,408	19,637	19,865	20,051	20,045
York	36,318	36,415	36,693	37,197	37,299	37,361	37,325	37,800	37,753	
VILLAGES	Ardsley	4,269	4,277	4,299	4,326	4,833	4,843	4,850	4,851	4,853
	Briarcliff Manor	7,696	7,711	7,820	7,917	8,020	7,988	7,990	7,993	7,950
	Bronxville	6,543	6,552	6,571	6,576	6,552	6,530	6,500	6,486	6,560
	Buchanan	2,189	2,197	2,224	2,227	2,236	2,258	2,266	2,269	2,252
	Croton-on-Hudson	7,606	7,629	7,696	7,725	7,820	7,901	7,883	7,899	7,919
	Dobbs Ferry	10,622	10,676	10,866	10,994	11,084	11,179	11,144	11,138	11,186
	Elmsford	4,676	4,686	4,716	4,742	4,747	4,755	4,761	4,761	4,769
	Hastings-on-Hudson	7,648	7,741	7,823	7,829	7,805	7,837	7,801	7,843	7,954
	Irvington	6,631	6,645	6,682	6,703	6,698	6,684	6,663	6,656	6,682
	Larchmont	6,485	6,494	6,514	6,519	6,561	6,555	6,534	6,530	6,587
	Mamaroneck	18,752	18,497	18,584	18,616	18,577	18,541	18,482	18,472	18,456
	Mount Kisco	9,983	10,004	10,064	10,104	10,083	10,100	10,406	10,441	10,433
	Ossining	24,010	24,038	24,050	24,268	23,616	23,638	23,593	23,578	23,920
	Pelham Manor	5,466	5,475	5,497	5,497	5,476	5,457	5,434	5,427	5,488
	Pelham	6,400	6,412	6,442	6,456	6,441	6,430	6,411	6,404	6,472
	Pleasantville	7,172	7,185	7,219	7,228	7,206	7,196	7,180	7,169	7,166
	Port Chester	27,867	27,914	28,014	28,052	28,066	27,983	28,034	28,006	28,195
	Rye Brook	8,602	8,690	8,921	9,107	9,270	9,426	9,536	9,671	9,599
	Scarsdale	17,823	17,860	17,964	18,027	18,009	17,964	17,893	17,886	17,751
	Sleepy Hollow	9,212	9,228	9,270	9,287	9,270	9,946	10,050	10,124	10,220
Tarrytown	11,090	11,151	11,372	11,477	11,483	11,457	11,490	11,477	11,403	
Tuckahoe	6,211	6,221	6,245	6,264	6,279	6,283	6,302	6,300	6,249	

Source: US Census Bureau, Population Estimates Program

**Population Comparisons, New York Metropolitan Region Counties, 1990-2006**

Ranked by 2006 Population

Rank	County	2000 Population	2006 Population	Population Change (2000-2006)	Percent Change (2000-2006)	1990 Population	Population Change (1990-2000)	Percent Change (1990-2000)
1	Kings County, New York	2,465,326	2,508,820	43,494	1.8%	2,300,664	164,662	7.2%
2	Queens County, New York	2,229,379	2,255,175	25,796	1.2%	1,951,598	277,781	14.2%
3	New York County, New York	1,537,195	1,611,581	74,386	4.8%	1,487,536	49,659	3.3%
4	Suffolk County, New York	1,419,369	1,469,715	50,346	3.5%	1,321,768	97,601	7.4%
5	Bronx County, New York	1,332,650	1,361,473	28,823	2.2%	1,203,789	128,861	10.7%
6	Nassau County, New York	1,334,544	1,325,662	-8,882	-0.7%	1,287,444	47,100	3.7%
<b>7</b>	<b>Westchester County, New York</b>	<b>923,459</b>	<b>949,355</b>	<b>25,896</b>	<b>2.8%</b>	<b>874,866</b>	<b>48,593</b>	<b>5.6%</b>
8	Bergen County, New Jersey	884,118	904,037	19,919	2.3%	825,380	58,738	7.1%
9	Fairfield County, Connecticut	882,567	900,440	17,873	2.0%	827,645	54,922	6.6%
10	New Haven County, Connecticut	824,008	845,244	21,236	2.6%	804,219	19,789	2.5%
11	Essex County, New Jersey	793,633	786,147	-7,486	-0.9%	778,206	15,427	2.0%
12	Hudson County, New Jersey	608,975	601,146	-7,829	-1.3%	553,099	55,876	10.1%
13	Union County, New Jersey	522,541	531,088	8,547	1.6%	493,819	28,722	5.8%
14	Passaic County, New Jersey	489,049	497,093	8,044	1.6%	453,060	35,989	7.9%
15	Richmond County, New York	443,728	477,377	33,649	7.6%	378,977	64,751	17.1%
16	Orange County, New York	341,367	376,392	35,025	10.3%	307,647	33,720	11.0%
17	Dutchess County, New York	280,150	295,146	14,996	5.4%	259,462	20,688	8.0%
18	Rockland County, New York	286,753	294,965	8,212	2.9%	265,475	21,278	8.0%
19	Putnam County, New York	95,745	100,603	4,858	5.1%	83,941	11,804	14.1%

Source: U.S. Census Bureau, Population Estimates Program. Prepared by the Westchester County Department of Planning.

## Population Projections by Age and Race, 2010-2030 Westchester County, NY

	1990	2000	2010	2015	2020	2025	2030
<b>Total Population</b>	<b>874,866</b>	<b>923,459</b>	<b>945,174</b>	<b>957,216</b>	<b>964,583</b>	<b>973,455</b>	<b>982,666</b>
0 - 4 yrs	59,277	64,242	60,342	62,799	67,455	71,416	73,283
5 - 9 yrs	51,239	67,993	65,160	63,477	66,141	71,221	76,606
10 - 14 yrs	50,102	63,757	67,537	64,390	61,919	64,097	68,114
15 - 19 yrs	53,670	54,363	64,721	64,565	60,163	57,625	58,776
20 - 24 yrs	62,538	46,962	54,865	60,214	58,995	54,807	49,998
25 - 29 yrs	72,003	54,734	53,758	60,141	65,164	63,808	63,402
30 - 34 yrs	74,461	68,733	54,252	56,800	62,917	67,538	63,733
35 - 39 yrs	69,264	79,809	61,301	57,559	59,471	65,468	74,148
40 - 44 yrs	65,915	77,224	71,407	60,367	56,151	57,765	61,512
45 - 49 yrs	55,182	68,166	74,013	67,218	56,256	52,247	54,310
50 - 54 yrs	46,870	61,832	71,878	71,661	64,346	53,445	44,141
55 - 59 yrs	44,562	48,310	62,178	67,990	66,779	59,537	51,125
60 - 64 yrs	44,920	38,370	51,583	56,499	61,527	60,584	54,658
65 - 69 yrs	39,094	34,039	38,676	46,781	51,044	55,771	58,449
70 - 74 yrs	30,315	32,746	30,593	33,659	40,533	44,361	46,086
75 - 79 yrs	24,804	26,529	23,820	24,637	27,029	32,717	39,493
80 - 84 yrs	16,856	17,991	18,101	16,840	17,527	19,400	21,762
85 + yrs	13,794	17,659	20,989	21,619	21,166	21,648	23,070
0 - 14 yrs	160,618	195,992	193,039	190,666	195,515	206,734	218,003
15 to 24	116,208	101,325	119,586	124,779	119,158	112,432	108,774
25 to 59	428,257	458,808	448,787	441,736	431,084	419,808	412,371
60 and Over	169,783	167,334	183,762	200,035	218,826	234,481	243,518
White	718,027	733,858	723,106	723,386	726,895	734,794	743,597
Black	122,968	142,310	163,995	172,031	174,582	175,259	175,600
Asian	32,391	43,946	53,634	57,001	58,163	58,382	58,398
Amer Ind	1,480	3,345	4,439	4,798	4,941	5,021	5,078

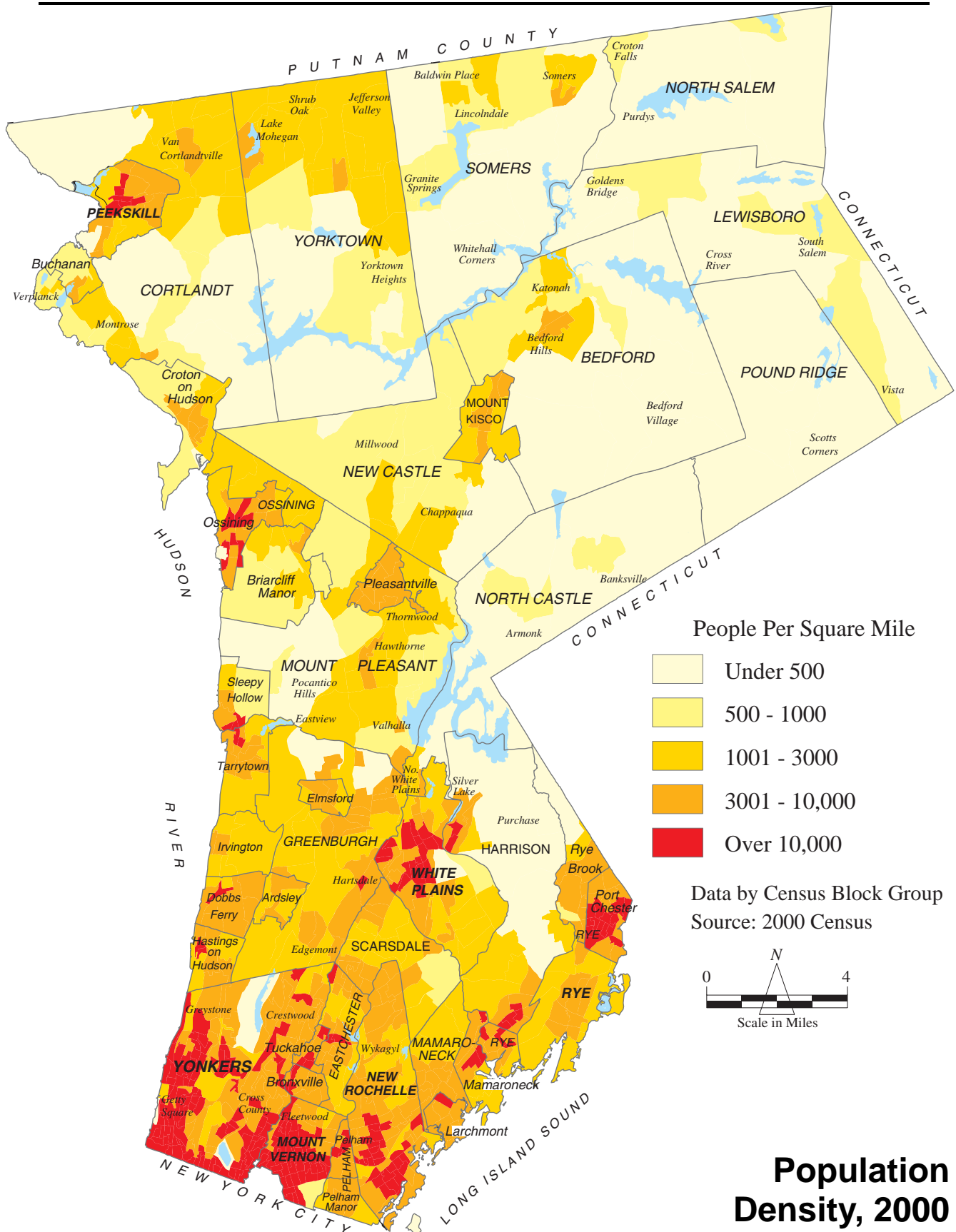
Source: U.S. Census Bureau. 2010 to 2030 projections by the NYSDOT, Special forecasts prepared by Global Insight, December 2003.

Prepared by the Westchester County Department of Planning.

## Population Density, 1990-2000 Westchester County, NY

Municipality	Square Miles	1990 Census	2000 Census	1990 Density people/sq mi	2000 Density people/sq mi	Population Change	
Westchester County	448.0	874,866	923,459	1,953	2,061	6%	
Cities	49.8	130,755	138,626	2,626	2,784	6%	
Villages	172.6	528,592	554,726	3,063	3,214	5%	
Towns	225.6	215,519	230,107	955	1,020	7%	
CITIES	Mount Vernon	4.4	67,153	68,381	15,262	15,541	2%
	New Rochelle	10.4	67,265	72,182	6,468	6,941	7%
	Peekskill	4.6	19,536	22,441	4,247	4,878	15%
	Rye	6.1	14,936	14,955	2,449	2,452	0%
	White Plains	9.9	48,718	53,077	4,921	5,361	9%
	Yonkers	18.4	188,082	196,086	10,222	10,657	4%
TOWNS	Bedford	39.5	16,906	18,133	428	459	7%
	Cortlandt	34.7	28,369	28,672	818	826	1%
	Eastchester	3.4	18,537	18,564	5,452	5,460	0%
	Greenburgh	17.8	40,579	41,828	2,280	2,350	3%
	Harrison	17.4	23,308	24,154	1,340	1,388	4%
	Lewisboro	29.3	11,313	12,324	386	421	9%
	Mamaroneck	3.5	11,231	11,141	3,209	3,183	-1%
	Mount Pleasant	24.1	25,242	26,151	1,047	1,085	4%
	New Castle	23.1	16,648	17,491	721	757	5%
	North Castle	26.2	10,061	10,849	384	414	8%
	North Salem	21.3	4,725	5,173	222	243	9%
	Ossining	3.0	5,076	5,514	1,692	1,838	9%
	Pound Ridge	23.2	4,550	4,726	196	204	4%
	Somers	32.1	16,216	18,346	505	572	13%
Yorktown	39.5	33,467	36,318	847	919	9%	
VILLAGES	Ardsey	1.3	4,272	4,269	3,286	3,284	0%
	Briarcliff Manor	6.0	7,070	7,696	1,178	1,283	9%
	Bronxville	1.0	6,028	6,543	6,028	6,543	9%
	Buchanan	1.5	1,970	2,189	1,313	1,459	11%
	Croton-on-Hudson	4.9	7,018	7,606	1,432	1,552	8%
	Dobbs Ferry	2.4	9,940	10,622	4,142	4,426	7%
	Elmsford	1.0	3,938	4,676	3,938	4,676	19%
	Hastings-on-Hudson	2.0	8,000	7,648	4,000	3,824	-4%
	Irvington	2.8	6,348	6,631	2,267	2,368	4%
	Larchmont	1.1	6,181	6,485	5,619	5,895	5%
	Mamaroneck	3.3	17,325	18,752	5,250	5,682	8%
	Mount Kisco	3.1	9,108	9,983	2,938	3,220	10%
	Ossining	3.2	22,582	24,010	7,057	7,503	6%
	Pelham	0.8	6,413	6,400	8,016	8,000	0%
	Pelham Manor	1.3	5,490	5,466	4,223	4,205	0%
	Pleasantville	1.8	6,592	7,172	3,662	3,984	9%
	Port Chester	2.4	24,728	27,867	10,303	11,611	13%
	Rye Brook	3.5	7,765	8,602	2,219	2,458	11%
	Scarsdale	6.7	16,987	17,823	2,535	2,660	5%
	Sleepy Hollow	2.3	8,152	9,212	3,544	4,005	13%
Tarrytown	3.1	10,739	11,090	3,464	3,577	3%	
Tuckahoe	0.6	6,302	6,211	10,503	10,352	-1%	

Source: US Census Bureau. Prepared by the Westchester County Department of Planning.



## Population Density, 2000

## Population by Age, 2000 Westchester County, NY

Municipality		Total Population	Age Categories						
			Under 5 years	5 to 19 years	20 to 34 years	35 to 54 years	55 to 59 years	60 to 64 years	65 years and over
Westchester County		923,459	64,242	186,113	170,429	287,031	48,310	38,370	128,964
Cities		427,122	29,731	83,636	90,275	122,592	21,222	17,606	62,060
Towns		279,384	19,541	58,798	39,507	94,833	16,169	12,460	38,076
Villages		216,953	14,970	43,679	40,647	69,606	10,919	8,304	28,828
CITIES	Mount Vernon	68,381	4,827	14,101	14,226	20,008	3,488	2,888	8,843
	New Rochelle	72,182	4,879	14,399	14,464	20,641	3,657	2,957	11,185
	Peekskill	22,441	1,706	4,197	5,225	7,018	974	736	2,585
	Rye	14,955	1,300	3,327	1,969	4,904	816	627	2,012
	White Plains	53,077	3,317	8,938	11,450	16,161	2,845	2,308	8,058
	Yonkers	196,086	13,702	38,674	42,941	53,860	9,442	8,090	29,377
TOWNS	Bedford	18,133	1,352	3,871	2,951	6,361	993	734	1,871
	Cortlandt	28,672	2,127	6,116	4,103	9,941	1,622	1,137	3,626
	Eastchester	18,564	1,212	3,162	2,761	5,788	1,099	917	3,625
	Greenburgh	41,828	2,712	7,570	6,469	14,118	2,660	2,110	6,189
	Harrison	24,154	1,618	5,207	4,311	7,319	1,107	1,055	3,537
	Lewisboro	12,324	958	3,127	1,251	4,856	779	478	875
	Mamaroneck	11,141	845	2,425	1,402	3,791	704	485	1,489
	Mount Pleasant	26,151	1,691	5,722	4,639	8,386	1,278	1,058	3,377
	New Castle	17,491	1,398	4,430	1,667	6,521	1,120	747	1,608
	North Castle	10,849	810	2,582	1,238	3,868	679	511	1,161
	North Salem	5,173	386	1,036	679	1,803	293	255	721
	Ossining Town	5,514	327	882	698	1,913	348	302	1,044
	Pound Ridge	4,726	348	954	450	1,759	371	267	577
	Somers	18,346	1,235	3,530	2,062	5,938	1,129	921	3,531
	Yorktown	36,318	2,522	8,184	4,826	12,471	1,987	1,483	4,845
VILLAGES	Ardley	4,269	251	1,002	424	1,489	229	221	653
	Briarcliff Manor	7,696	539	1,782	968	2,525	454	300	1,128
	Bronxville	6,543	458	1,625	905	2,134	345	280	796
	Buchanan	2,189	146	444	407	703	112	97	280
	Croton-on-Hudson	7,606	591	1,474	997	2,785	437	290	1,032
	Dobbs Ferry	10,622	565	2,473	1,631	3,425	532	386	1,610
	Elmsford	4,676	313	844	1,308	1,338	199	158	516
	Hastings-on-Hudson	7,648	407	1,582	936	2,749	444	345	1,185
	Irvington	6,631	518	1,435	849	2,278	375	277	899
	Larchmont	6,485	573	1,417	923	2,122	348	264	838
	Mamaroneck village	18,752	1,191	3,481	3,664	5,789	914	700	3,013
	Mount Kisco	9,983	660	1,731	2,332	3,291	458	324	1,187
	Ossining Village	24,010	1,488	3,923	6,253	7,810	1,088	795	2,653
	Pelham	6,400	469	1,415	1,084	2,111	311	239	771
	Pelham Manor	5,466	426	1,261	620	1,801	334	259	765
	Pleasantville	7,172	500	1,662	1,053	2,388	347	267	955
	Port Chester	27,867	1,947	5,063	7,408	7,880	1,117	849	3,603
	Rye Brook	8,602	668	1,615	1,126	2,786	532	384	1,491
	Scarsdale	17,823	1,357	4,772	1,444	6,131	1,189	854	2,076
	Sleepy Hollow	9,212	721	1,827	2,323	2,715	349	306	971
Tarrytown	11,090	732	1,752	2,640	3,358	535	481	1,592	
Tuckahoe	6,211	450	1,099	1,352	1,998	270	228	814	

Source: US Census Bureau. Prepared by the Westchester County Department of Planning.

**Population Projections by Age and Race, 2010-2030  
Westchester County, NY**

	1990	2000	2010	2015	2020	2025	2030
<b>Total Population</b>	<b>874,866</b>	<b>923,459</b>	<b>945,174</b>	<b>957,216</b>	<b>964,583</b>	<b>973,455</b>	<b>982,666</b>
0 - 4 yrs	59,277	64,242	60,342	62,799	67,455	71,416	73,283
5 - 9 yrs	51,239	67,993	65,160	63,477	66,141	71,221	76,606
10 - 14 yrs	50,102	63,757	67,537	64,390	61,919	64,097	68,114
15 - 19 yrs	53,670	54,363	64,721	64,565	60,163	57,625	58,776
20 - 24 yrs	62,538	46,962	54,865	60,214	58,995	54,807	49,998
25 - 29 yrs	72,003	54,734	53,758	60,141	65,164	63,808	63,402
30 - 34 yrs	74,461	68,733	54,252	56,800	62,917	67,538	63,733
35 - 39 yrs	69,264	79,809	61,301	57,559	59,471	65,468	74,148
40 - 44 yrs	65,915	77,224	71,407	60,367	56,151	57,765	61,512
45 - 49 yrs	55,182	68,166	74,013	67,218	56,256	52,247	54,310
50 - 54 yrs	46,870	61,832	71,878	71,661	64,346	53,445	44,141
55 - 59 yrs	44,562	48,310	62,178	67,990	66,779	59,537	51,125
60 - 64 yrs	44,920	38,370	51,583	56,499	61,527	60,584	54,658
65 - 69 yrs	39,094	34,039	38,676	46,781	51,044	55,771	58,449
70 - 74 yrs	30,315	32,746	30,593	33,659	40,533	44,361	46,086
75 - 79 yrs	24,804	26,529	23,820	24,637	27,029	32,717	39,493
80 - 84 yrs	16,856	17,991	18,101	16,840	17,527	19,400	21,762
85 + yrs	13,794	17,659	20,989	21,619	21,166	21,648	23,070
0 - 14 yrs	160,618	195,992	193,039	190,666	195,515	206,734	218,003
15 to 24	116,208	101,325	119,586	124,779	119,158	112,432	108,774
25 to 59	428,257	458,808	448,787	441,736	431,084	419,808	412,371
60 and Over	169,783	167,334	183,762	200,035	218,826	234,481	243,518
White	718,027	733,858	723,106	723,386	726,895	734,794	743,597
Black	122,968	142,310	163,995	172,031	174,582	175,259	175,600
Asian	32,391	43,946	53,634	57,001	58,163	58,382	58,398
Amer Ind	1,480	3,345	4,439	4,798	4,941	5,021	5,078

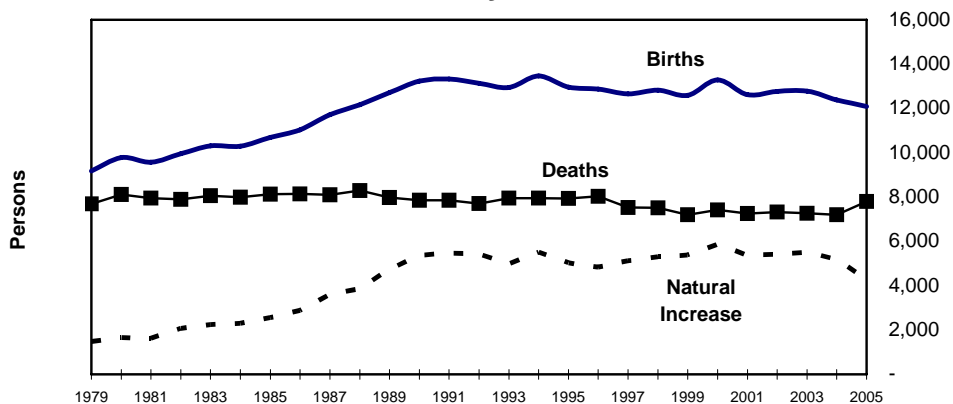
Source: U.S. Census Bureau. 2010 to 2030 projections provided by New York Metropolitan Transportation Council. Prepared by the Westchester County Department of Planning.

### Births, Deaths and Natural Increase, 1979 to 2005 Westchester County, NY

	Births	Deaths	Natural Increase
1979	9,182	7,694	1,488
1980	9,784	8,122	1,662
1981	9,574	7,948	1,626
1982	9,964	7,897	2,067
1983	10,313	8,061	2,252
1984	10,294	7,995	2,299
1985	10,694	8,135	2,559
1986	11,031	8,140	2,891
1987	11,719	8,105	3,614
1988	12,168	8,296	3,872
1989	12,707	7,974	4,733
1990	13,233	7,856	5,377
1991	13,333	7,856	5,477
1992	13,139	7,709	5,430
1993	12,946	7,953	4,993
1994	13,462	7,947	5,515
1995	12,963	7,934	5,029
1996	12,879	8,040	4,839
1997	12,653	7,523	5,130
1998	12,827	7,515	5,312
1999	12,592	7,198	5,394
2000	13,283	7,415	5,868
2001	12,615	7,259	5,356
2002	12,763	7,331	5,432
2003	12,784	7,269	5,515
2004	12,386	7,197	5,189
2005	12,080	7,807	4,273

Source: Westchester County Department of Health & the New York State Department of Health.  
Prepared by the Westchester County Department of Planning.

### Births, Deaths and Natural Increase Westchester County, NY 1979 - 2005



## Population by Race and Hispanic Origin, 2000-2006 Westchester County, NY

	Westchester Population 2000	Percent of West- chester Population 2000	Percent of U.S. Population 2000
<b>Total</b>	<b>923,459</b>	<b>100.0%</b>	
White	658,858	71.3	77.0
Black	131,132	14.2	12.6
Asian	41,738	4.5	3.9
Native American	2,343	0.3	0.9
Other	61,227	6.6	5.6
Two or More Races	28,161	3.0	NA
		0.0	0.0
<i>Hispanic Origin*</i>	<i>144,124</i>	<i>15.6</i>	<i>12.9</i>

	Westchester Population 2006 (est.)	Westchester % Pop. Change 2000 to 2006 (est.)	Westchester % of Population 2006 (est.)	U.S. % of Population 2006 (est.)
<b>Total</b>	<b>949,355</b>	<b>2.8%</b>	<b>100.0%</b>	
White	646,654	-1.9	68.1	73.9
Black	132,025	0.7	13.9	12.4
Asian	52,945	26.9	5.6	4.5
Native American	1,484	-36.7	0.2	0.8
Other	101,076	65.1	10.6	6.3
Two or More Races	15,171	-46.1	1.6	2.0
		0.0	0.0	0.0
<i>Hispanic Origin*</i>	<i>175,990</i>	<i>22.1</i>	<i>18.5</i>	<i>14.8</i>

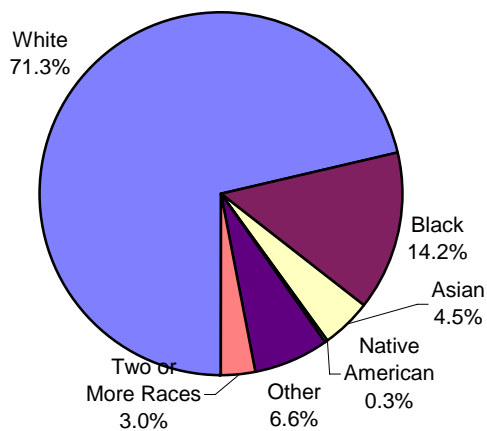
Source: U.S. Census Bureau. Prepared by the Westchester County Department of Planning.

Notes: Asian includes Asian and Pacific Islanders. Native American includes American Indian, Eskimo and Aleut.

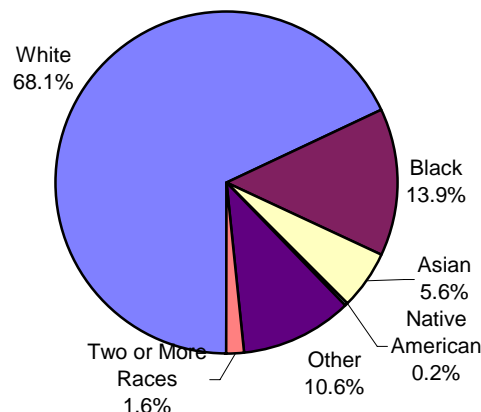
\*Hispanic population may be of any race. Total population is a sum of the five racial categories and does not include Hispanic.

Two or more races aggregates all people that responded to the possible combinations of the racial categories.

**2000 Population by Race**



**2006 Population by Race**



Source: US Census Bureau. Prepared by the Westchester County Department of Planning.

**Population by Race and Hispanic or Latino Origin, 2000  
Westchester County, NY**

Municipality	Total Population	Race							Two or More Races	Hispanic or Latino of Any Race	Minority*	Percent Minority*
		One Race										
		Population One Race	White	Black or African American	American Indian	Asian and Pacific Islander	Other Race					
<b>Westchester County</b>	923,459	895,298	658,858	131,132	2,343	41,738	61,227	28,161	144,124	331,683	36%	
<b>North</b>	264,794	254,660	218,827	18,402	457	8,635	8,339	5,040	24,896	54,533	21%	
<b>Central</b>	227,499	218,021	163,080	22,871	561	14,751	16,758	7,467	39,891	81,211	36%	
<b>South</b>	431,166	410,925	265,402	89,762	1,325	18,307	36,129	15,654	79,337	195,939	45%	
<b>Cities</b>	427,122	409,844	247,270	101,532	1,514	17,430	42,098	17,278	90,541	218,401	51%	
<b>Towns</b>	279,384	275,174	241,687	15,933	273	13,161	4,120	4,210	15,702	47,728	23%	
<b>Villages</b>	216,953	210,280	169,901	13,667	556	11,147	15,009	6,673	37,881	65,554	24%	
<b>CITIES</b>	Mount Vernon	68,381	65,346	19,577	40,743	219	1,491	3,316	3,035	7,083	51,704	76%
	New Rochelle	72,182	69,894	49,001	13,848	141	2,369	4,535	2,288	14,492	31,910	44%
	Peekskill	22,441	21,400	12,819	5,732	95	548	2,206	1,041	4,920	11,665	52%
	Rye City	14,955	14,769	13,401	190	16	972	190	186	718	2,048	14%
	White Plains	53,077	51,019	34,465	8,444	182	2,426	5,502	2,058	12,476	24,334	46%
	Yonkers	196,086	187,416	118,007	32,575	861	9,624	26,349	8,670	50,852	96,740	49%
<b>TOWNS</b>	Bedford	18,133	17,887	15,867	1,291	16	373	340	246	1,372	3,075	17%
	Cortlandt	28,672	28,176	25,015	1,608	55	808	690	496	2,163	4,921	17%
	Eastchester	18,564	18,336	16,748	175	12	1,226	175	228	661	2,282	12%
	Greenburgh	41,828	40,770	26,724	8,489	57	4,379	1,121	1,058	3,422	17,042	41%
	Harrison	24,154	23,751	21,686	345	21	1,316	383	403	1,618	3,570	15%
	Lewisboro	12,324	12,202	11,730	147	7	258	60	122	306	843	7%
	Mamaroneck Town	11,141	10,977	10,252	208	5	387	125	164	501	1,225	11%
	Mount Pleasant	26,151	25,889	23,048	1,493	14	1,027	307	262	1,369	3,976	15%
	New Castle	17,491	17,316	16,004	240	8	974	90	175	487	1,866	11%
	North Castle	10,849	10,719	10,022	191	3	435	68	130	449	1,167	11%
	North Salem	5,173	5,088	4,937	39	4	50	58	85	189	377	7%
	Ossining Town	5,514	5,422	4,820	234	8	253	107	92	394	949	17%
	Pound Ridge	4,726	4,669	4,515	57	3	79	15	57	116	303	6%
	Somers	18,346	18,173	17,400	313	9	342	109	173	543	1,340	7%
Yorktown	36,318	35,799	32,919	1,103	51	1,254	472	519	2,112	4,792	13%	
<b>VILLAGES</b>	Ardsey	4,269	4,214	3,586	65	4	528	31	55	182	824	19%
	Briarcliff Manor	7,696	7,615	6,983	133	4	422	73	81	241	871	11%
	Bronxville	6,543	6,458	6,012	75	3	320	48	85	192	673	10%
	Buchanan	2,189	2,168	2,106	15	4	26	17	21	76	137	6%
	Croton-on-Hudson	7,606	7,477	6,961	142	20	158	196	129	527	939	12%
	Dobbs Ferry	10,622	10,382	8,572	784	8	813	205	240	744	2,488	23%
	Elmsford	4,676	4,406	2,609	949	35	426	387	270	1,089	2,608	56%
	Hastings-on-Hudson	7,648	7,516	6,867	180	13	317	139	132	344	965	13%
	Irvington	6,631	6,520	5,879	96	7	461	77	111	251	911	14%
	Larchmont	6,485	6,399	6,111	44	6	188	50	86	291	598	9%
	Mamaroneck	18,752	18,264	15,859	778	46	672	909	488	3,284	4,943	26%
	Mount Kisco	9,983	9,716	7,766	598	28	423	901	267	2,450	3,596	36%
	Ossining	24,010	23,006	14,520	4,858	115	1,007	2,506	1,004	6,654	12,716	53%
	Pelham	6,400	6,233	5,326	426	6	317	158	167	461	1,360	21%
	Pelham Manor	5,466	5,368	5,037	116	4	153	58	98	253	594	11%
	Pleasantville	7,172	7,032	6,480	208	13	207	124	140	528	1,000	14%
	Port Chester	27,867	25,964	16,914	1,949	112	584	6,405	1,903	12,884	15,933	57%
	Rye Brook	8,602	8,502	7,910	89	18	368	117	100	468	1,000	12%
	Scarsdale	17,823	17,579	14,989	271	3	2,245	71	244	467	3,229	18%
	Sleepy Hollow	9,212	8,704	6,231	482	77	180	1,734	508	4,153	4,831	52%
Tarrytown	11,090	10,705	8,588	781	24	725	587	385	1,793	3,476	31%	
Tuckahoe	6,211	6,052	4,595	628	6	607	216	159	549	1,862	30%	

Source: US Census Bureau. Prepared by the Westchester County Department of Planning.  
Note: Persons of Hispanic Origin may be of any race. Minority includes all races except non-Hispanic White.

## Hispanic Population by Place of Origin, 2000 Westchester County, NY

Municipality		Total Hispanic or Latino	Mexico	Puerto Rico	Cuba	Dominican Republic	Central America	South America	Other Place
<b>Westchester County</b>		144,124	25,611	34,898	4,498	13,050	10,493	26,561	29,013
<b>Cities</b>		90,541	19,239	24,937	2,296	9,833	5,424	12,362	16,450
<b>Towns</b>		15,702	1,554	5,049	734	677	791	3,276	3,621
<b>Villages</b>		37,881	4,818	4,912	1,468	2,540	4,278	10,923	8,942
<b>CITIES</b>	Mount Vernon	7,083	1,361	2,212	192	792	383	808	1,335
	New Rochelle	14,492	6,899	1,918	237	381	741	2,435	1,881
	Peekskill	4,920	184	1,454	52	144	435	1,314	1,337
	Rye	718	91	94	66	11	38	220	198
	White Plains	12,476	3,410	1,162	299	667	453	3,641	2,844
	Yonkers	50,852	7,294	18,097	1,450	7,838	3,374	3,944	8,855
<b>TOWNS</b>	Bedford	1,372	143	341	31	37	204	286	330
	Cortlandt	2,163	97	1,056	80	94	102	298	436
	Eastchester	661	75	224	25	17	36	105	179
	Greenburgh	3,422	544	923	184	182	112	753	724
	Harrison	1,618	182	269	48	85	54	603	377
	Lewisboro	306	44	96	23	8	15	50	70
	Mamaroneck	501	68	101	30	17	14	135	136
	Mount Pleasant	1,369	145	376	55	62	74	183	474
	New Castle	487	31	106	39	14	31	154	112
	North Castle	449	54	101	39	10	45	117	83
	North Salem	189	14	45	29	3	15	42	41
	Ossining Town	394	31	118	14	7	24	90	110
	Pound Ridge	116	12	29	4	4	9	33	25
	Somers	543	36	213	43	19	9	119	104
Yorktown	2,112	78	1,051	90	118	47	308	420	
<b>VILLAGES</b>	Ardasley	182	8	71	11	9	8	26	49
	Briarcliff Manor	241	11	81	40	21	6	35	47
	Bronxville	192	21	54	15	2	12	41	47
	Buchanan	76	4	35	1	12	-	14	10
	Croton-on-Hudson	527	38	94	23	12	21	227	112
	Dobbs Ferry	744	75	226	47	38	84	65	209
	Elmsford	1,089	163	143	21	54	75	340	293
	Hastings-on-Hudson	344	26	89	14	15	58	66	76
	Irvington	251	22	75	11	10	9	60	64
	Larchmont	291	52	33	20	9	14	75	88
	Mamaroneck	3,284	575	342	58	66	783	699	761
	Mount Kisco	2,450	175	188	22	38	836	588	603
	Ossining Village	6,654	168	1,194	132	423	280	2,819	1,638
	Pelham	461	43	206	28	19	15	54	96
	Pelham Manor	253	6	113	21	15	15	20	63
	Pleasantville	528	53	137	19	12	18	161	128
	Port Chester	12,884	3,108	842	465	273	1,819	3,516	2,861
	Rye Brook	468	27	67	49	3	46	118	158
	Scarsdale	467	58	77	35	13	22	137	125
	Sleepy Hollow	4,153	58	337	181	1,167	85	1,321	1,004
Tarrytown	1,793	87	291	213	271	44	477	410	
Tuckahoe	549	40	217	42	58	28	64	100	

Source: US Census Bureau.

Prepared by the Westchester County Department of Planning.

## Hispanic Population by Central American Country of Origin, 2000 Westchester County, NY

Municipality	Total Hispanic or Latino	Total Central America	Central American Countries							
			Costa Rica	Guatemala	Honduras	Nicaragua	Panama	El Salvador	Other	
Westchester County	144,124	10,493	368	4,217	1,411	550	397	3,104	446	
Cities	90,541	5,424	249	1,199	1,054	474	250	1,944	254	
Towns	15,702	791	31	373	90	27	64	160	46	
Villages	37,881	4,278	88	2,645	267	49	83	1,000	146	
CITIES	Mount Vernon	7,083	383	28	61	124	9	63	67	31
	New Rochelle	14,492	741	47	330	92	45	33	145	49
	Peekskill	4,920	435	13	261	49	6	14	81	11
	Rye	718	38	4	6	5	1	2	19	1
	White Plains	12,476	453	22	198	48	22	23	114	26
	Yonkers	50,852	3,374	135	343	736	391	115	1,518	136
TOWNS	Bedford	1,372	204	1	152	11	1	6	25	8
	Cortlandt	2,163	102	8	28	12	3	3	43	5
	Eastchester	661	36	1	15	5	-	7	7	1
	Greenburgh	3,422	112	6	28	24	1	17	34	2
	Harrison	1,618	54	4	18	1	2	8	19	2
	Lewisboro	306	15	-	12	-	-	-	3	-
	Mamaroneck	501	14	-	2	5	5	-	1	1
	Mount Pleasant	1,369	74	2	49	9	2	-	6	6
	New Castle	487	31	1	8	-	2	16	-	4
	North Castle	449	45	-	15	8	4	2	4	12
	North Salem	189	15	-	12	-	1	1	1	-
	Ossining Town	394	24	1	11	4	4	-	-	4
	Pound Ridge	116	9	3	6	-	-	-	-	-
	Somers	543	9	-	3	1	-	2	3	-
Yorktown	2,112	47	4	14	10	2	2	14	1	
VILLAGES	Ardley	182	8	-	-	1	-	6	-	1
	Briarcliff Manor	241	6	-	3	2	1	-	-	-
	Bronxville	192	12	-	2	2	-	2	6	-
	Buchanan	76	-	-	-	-	-	-	-	-
	Croton-on-Hudson	527	21	-	3	7	-	7	-	4
	Dobbs Ferry	744	84	-	54	5	2	3	20	-
	Elmsford	1,089	75	1	57	5	-	1	6	5
	Hastings-on-Hudson	344	58	-	22	1	6	3	26	-
	Irvington	251	9	-	6	1	-	-	2	-
	Larchmont	291	14	1	2	-	-	2	9	-
	Mamaroneck	3,284	783	18	544	25	6	11	164	15
	Mount Kisco	2,450	836	2	657	51	1	1	107	17
	Ossining Village	6,654	280	31	111	53	11	22	44	8
	Pelham	461	15	2	9	1	-	-	2	1
	Pelham Manor	253	15	-	-	9	1	3	-	2
	Pleasantville	528	18	1	16	-	-	-	1	-
	Port Chester	12,884	1,819	22	1,037	97	14	9	558	82
	Rye Brook	468	46	3	29	2	1	2	9	-
	Scarsdale	467	22	1	10	1	1	5	4	-
	Sleepy Hollow	4,153	85	1	55	1	3	-	18	7
Tarrytown	1,793	44	2	14	3	2	6	13	4	
Tuckahoe	549	28	3	14	-	-	-	11	-	

Source: U.S. Census Bureau. Prepared by the Westchester County Department of Planning.

## Hispanic Population by South American Country of Origin, 2000 Westchester County, NY

Municipality	Total Hispanic or Latino	South American Countries										Other South American	
		South America	Argentina	Bolivia	Chile	Colombia	Ecuador	Paraguay	Peru	Uruguay	Venezuela		
Westchester County	144,124	26,561	962	371	1,100	7,032	9,360	576	5,196	690	487	787	
Cities	90,541	12,362	423	90	304	4,048	3,564	282	2,823	187	272	369	
Towns	15,702	3,276	272	58	163	951	626	193	617	158	96	142	
Villages	37,881	10,923	267	223	633	2,033	5,170	101	1,756	345	119	276	
CITIES	Mount Vernon	7,083	808	32	13	38	359	122	61	122	11	18	32
	New Rochelle	14,492	2,435	80	10	62	1,071	165	29	791	72	70	85
	Peekskill	4,920	1,314	20	-	7	128	970	-	102	49	19	19
	Rye	718	220	20	10	30	41	16	4	78	4	3	14
	White Plains	12,476	3,641	81	42	35	1,458	452	171	1,266	22	36	78
	Yonkers	50,852	3,944	190	15	132	991	1,839	17	464	29	126	141
TOWNS	Bedford	1,372	286	10	1	7	104	95	15	42	3	4	5
	Cortlandt	2,163	298	17	4	14	90	76	8	42	30	3	14
	Eastchester	661	105	14	3	5	12	21	1	25	4	7	13
	Greenburgh	3,422	753	58	14	42	190	139	28	209	11	26	36
	Harrison	1,618	603	42	18	29	199	37	94	124	27	17	16
	Lewisboro	306	50	12	2	2	17	4	1	6	4	1	1
	Mamaroneck	501	135	25	6	20	43	15	1	16	1	6	2
	Mount Pleasant	1,369	183	15	2	5	52	47	12	26	12	4	8
	New Castle	487	154	12	-	3	26	44	14	26	17	10	2
	North Castle	449	117	9	2	2	58	13	5	17	8	-	3
	North Salem	189	42	4	-	-	28	2	-	-	3	3	2
	Ossining Town	394	90	3	1	7	19	17	-	10	23	5	5
	Pound Ridge	116	33	4	2	2	3	7	2	4	-	1	8
	Somers	543	119	13	-	11	47	14	2	21	1	1	9
Yorktown	2,112	308	34	3	14	63	95	10	49	14	8	18	
VILLAGES	Ardasley	182	26	4	1	7	5	2	1	-	-	2	4
	Briarcliff Manor	241	35	6	1	1	11	5	-	5	3	1	2
	Bronxville	192	41	13	-	2	4	1	-	10	-	9	2
	Buchanan	76	14	-	-	3	3	5	-	3	-	-	-
	Croton-on-Hudson	527	227	5	2	3	39	132	1	28	5	4	8
	Dobbs Ferry	744	65	11	-	4	17	18	2	11	1	-	1
	Elmsford	1,089	340	1	-	5	100	116	2	105	3	-	8
	Hastings-on-Hudson	344	66	4	-	13	11	19	-	12	-	7	-
	Irvington	251	60	11	-	15	15	5	1	8	-	-	5
	Larchmont	291	75	11	1	3	18	6	-	19	1	12	4
	Mamaroneck	3,284	699	47	20	41	150	71	39	260	31	25	15
	Mount Kisco	2,450	588	14	-	11	226	228	2	88	1	4	14
	Ossining	6,654	2,819	31	11	152	456	1,796	12	99	179	16	67
	Pelham	461	54	4	7	1	17	2	-	21	-	2	-
	Pelham Manor	253	20	6	2	1	4	2	1	2	-	2	-
	Pleasantville	528	161	5	-	2	43	81	7	17	2	-	4
	Port Chester	12,884	3,516	45	163	111	696	1,366	17	919	95	9	95
	Rye Brook	468	118	3	13	5	16	18	6	33	9	13	2
	Scarsdale	467	137	23	1	13	34	19	2	29	4	5	7
	Sleepy Hollow	4,153	1,321	5	1	185	72	991	2	34	2	-	29
Tarrytown	1,793	477	11	-	54	81	267	3	43	9	2	7	
Tuckahoe	549	64	7	-	1	15	20	3	10	-	6	2	

Source: US Census Bureau. Prepared by the Westchester County Department of Planning.

## Asian Population by Country of Origin, 2000 Westchester County, NY

Municipality		Total Asian	India	China	Japan	Philippines	Korea	Pakistan	Thailand	Vietnam	Taiwan	Other Asian
Westchester County		40,880	14,107	7,555	6,731	4,882	4,457	960	539	339	295	1,015
Cities		17,010	7,695	2,352	1,229	2,856	1,373	517	325	139	67	457
Towns		12,921	3,413	2,998	2,976	1,089	1,669	183	106	120	127	240
Villages		10,949	2,999	2,205	2,526	937	1,415	260	108	80	101	318
CITIES	Mount Vernon	1,437	830	168	61	178	58	30	57	5	14	36
	New Rochelle	2,312	1,073	428	95	373	138	62	19	11	7	106
	Peekskill	531	212	124	5	94	29	3	3	29	1	31
	Rye	958	86	143	578	52	77	2	3	-	3	14
	White Plains	2,360	946	551	276	257	186	32	14	27	25	46
	Yonkers	9,412	4,548	938	214	1,902	885	388	229	67	17	224
TOWNS	Bedford	354	91	82	24	98	42	4	-	3	-	10
	Cortlandt	798	293	236	45	82	60	34	5	11	7	25
	Eastchester	1,208	170	163	581	54	200	3	22	4	8	3
	Greenburgh	4,311	1,297	732	1,139	376	573	39	25	20	40	70
	Harrison	1,304	145	199	661	81	144	27	10	3	2	32
	Lewisboro	257	58	88	18	17	60	4	1	1	-	10
	Mamaroneck	382	76	94	131	22	40	2	3	7	3	4
	Mount Pleasant	997	300	281	94	53	161	13	11	24	26	34
	New Castle	957	238	314	135	62	154	16	8	4	10	16
	North Castle	423	113	167	45	14	67	-	-	1	11	5
	North Salem	50	7	13	8	6	7	1	-	2	-	6
	Ossining Town	249	92	50	14	36	29	16	-	9	1	2
	Pound Ridge	78	23	24	7	11	11	-	2	-	-	-
	Somers	333	83	120	29	28	44	-	-	12	7	10
Yorktown	1,220	427	435	45	149	77	24	19	19	12	13	
VILLAGES	Ardley	521	155	99	109	32	94	19	2	-	1	10
	Briarcliff Manor	414	132	125	52	18	45	29	-	2	4	7
	Bronxville	306	45	32	128	28	45	12	5	1	9	1
	Buchanan	25	2	2	2	3	10	-	-	-	-	6
	Croton-on-Hudson	156	37	72	12	6	9	7	4	-	5	4
	Dobbs Ferry	798	217	127	156	57	161	45	4	-	-	31
	Elmsford	417	233	50	10	70	16	12	1	6	9	10
	Hastings-on-Hudson	316	82	83	48	31	39	8	-	3	3	19
	Irvington	446	105	75	151	10	100	1	1	1	-	2
	Larchmont	181	20	44	68	4	24	5	-	4	-	12
	Mamaroneck	656	112	113	264	75	75	-	4	-	3	10
	Mount Kisco	416	148	112	22	46	35	17	1	10	2	23
	Ossining	993	396	248	60	140	49	25	4	35	1	35
	Pelham	317	184	50	7	27	22	4	10	-	-	13
	Pelham Manor	151	41	39	13	20	19	-	10	-	-	9
	Pleasantville	198	48	62	34	11	25	8	3	4	2	1
	Port Chester	572	238	96	31	125	24	20	10	5	1	22
	Rye Brook	365	72	58	185	15	26	3	3	1	-	2
	Scarsdale	2,216	374	480	691	113	367	27	36	4	57	67
	Sleepy Hollow	170	48	48	6	41	20	2	1	1	-	3
Tarrytown	711	244	144	128	52	117	9	1	2	4	10	
Tuckahoe	604	66	46	349	13	93	7	8	1	-	21	

Source: US Census Bureau. Prepared by the Westchester County Department of Planning.

## Households and Families, 2000 Westchester County, NY

Municipality		Households	Average Household Size	Families	Average Family Size	Married-couple families	Married With own children under 18 years	Male Householder, no wife present	Female Householder, no husband present
Westchester County Total		337,142	2.7	235,201	3.2	181,690	88,975	12,366	41,145
Cities		161,263	2.6	105,575	3.2	72,206	33,351	7,313	26,056
Towns		97,835	2.8	74,637	3.2	64,985	32,771	2,279	7,373
Villages		78,044	2.7	54,989	3.2	44,499	22,853	2,774	7,716
CITIES	Mount Vernon	25,729	2.6	16,669	3.3	9,487	4,321	1,272	5,910
	New Rochelle	26,189	2.7	17,541	3.3	13,235	6,626	1,029	3,277
	Peekskill	8,696	2.6	5,344	3.2	3,452	1,618	476	1,416
	Rye	5,377	2.8	4,027	3.3	3,581	1,968	124	322
	White Plains	20,921	2.5	12,704	3.1	9,566	4,301	782	2,356
	Yonkers	74,351	2.6	49,290	3.2	32,885	14,517	3,630	12,775
TOWNS	Cortlandt	9,905	2.8	7,476	3.3	6,449	3,456	274	753
	Eastchester	7,687	2.4	5,127	3.0	4,310	1,926	175	642
	Greenburgh	16,001	2.6	11,475	3.1	9,384	4,215	429	1,662
	Harrison	8,394	2.7	6,187	3.2	5,239	2,566	220	728
	Mamaroneck	4,151	2.7	3,174	3.1	2,833	1,479	87	254
	Mount Pleasant	7,694	3.0	6,269	3.3	5,574	2,826	191	504
	Ossining Town	1,918	2.6	1,400	3.0	1,224	535	41	135
	Yorktown	12,556	2.8	9,830	3.3	8,675	4,598	267	888
VILLAGES	Ardsley	1,432	3.0	1,213	3.2	1,076	561	29	108
	Briarcliff Manor	2,435	2.8	1,996	3.2	1,813	986	38	145
	Bronxville	2,312	2.7	1,660	3.3	1,490	853	26	144
	Buchanan	814	2.7	610	3.1	488	234	32	90
	Croton-on-Hudson	2,798	2.6	2,052	3.1	1,748	933	75	229
	Dobbs Ferry	3,792	2.5	2,570	3.1	2,077	1,058	115	378
	Elmsford	1,674	2.8	1,157	3.3	855	379	100	202
	Hastings-on-Hudson	3,093	2.5	2,092	3.0	1,763	904	71	258
	Irvington	2,518	2.6	1,813	3.1	1,565	828	56	192
	Larchmont	2,418	2.7	1,710	3.3	1,513	862	44	153
	Mamaroneck village	7,096	2.6	4,876	3.1	3,916	1,870	261	699
	Mount Kisco	3,993	2.5	2,449	3.1	1,809	896	177	463
	Ossining Village	8,227	2.6	5,343	3.2	3,864	1,814	418	1,061
	Pelham	2,287	2.8	1,687	3.3	1,348	755	74	265
	Pelham Manor	1,862	2.9	1,504	3.3	1,323	728	43	138
	Pleasantville	2,637	2.6	1,825	3.2	1,537	799	81	207
	Port Chester	9,531	2.9	6,374	3.4	4,477	2,232	598	1,299
	Rye Brook	3,122	2.7	2,436	3.1	2,137	1,061	70	229
	Scarsdale	5,662	3.1	4,996	3.4	4,630	2,706	81	285
	Sleepy Hollow	3,181	2.9	2,238	3.4	1,637	863	176	425
Tarrytown	4,533	2.3	2,763	2.9	2,198	931	132	433	
Tuckahoe	2,627	2.4	1,625	3.0	1,235	600	77	313	

Source: US Census Bureau. Prepared by the Westchester County Department of Planning.

Note: Households include all persons occupying a housing unit, regardless of relation. Families include a householder and/or one or more persons living in the same housing unit who are related to the householder by blood, marriage or adoption.

## Foreign Born Population by Year of Entry, 2000 Westchester County, NY

	Municipality	Total Population	Foreign Born	Year of Entry to the United States				
				1990s	1980s	1970s	1965 to 1969	Prior to 1965
	Westchester County	923,459	205,429	79,184	54,147	28,634	13,249	30,215
	Cities	427,122	114,592	44,229	33,617	15,561	7,222	13,963
	Towns	279,486	39,521	11,539	8,286	6,984	3,360	9,352
	Villages	216,851	51,316	23,416	12,244	6,089	2,667	6,900
CITIES	Mount Vernon	68,381	19,882	7,018	6,479	3,408	1,415	1,562
	New Rochelle	72,182	19,722	8,260	4,967	2,849	1,277	2,369
	Peekskill	22,441	4,515	2,516	1,056	432	120	391
	Rye	14,955	3,214	1,590	538	252	258	576
	White Plains	53,077	15,572	6,883	4,477	1,814	860	1,538
	Yonkers	196,086	51,687	17,962	16,100	6,806	3,292	7,527
TOWNS	Bedford	18,133	2,300	783	535	276	190	516
	Cortlandt	28,672	3,337	699	744	749	346	799
	Eastchester	18,564	2,957	937	411	538	298	773
	Greenburgh	41,880	9,621	3,418	2,564	1,660	590	1,389
	Harrison	24,143	4,520	1,875	643	682	297	1,023
	Lewisboro	12,324	1,002	353	187	132	94	236
	Mamaroneck	11,130	2,029	751	515	301	108	354
	Mount Pleasant	26,223	3,046	480	647	633	354	932
	New Castle	17,491	1,970	547	301	412	164	546
	North Castle	10,849	1,383	328	273	249	122	411
	North Salem	5,173	521	113	149	125	31	103
	Ossining	5,514	656	221	131	115	33	156
	Pound Ridge	4,726	453	87	82	80	63	141
	Somers	18,346	1,921	278	301	313	245	784
Yorktown	36,318	3,805	669	803	719	425	1,189	
VILLAGES	Ardsley	4,274	812	307	99	152	100	154
	Briarcliff Manor	7,622	927	246	205	192	70	214
	Bronxville	6,543	983	495	163	95	61	169
	Buchanan	2,189	161	50	36	25	6	44
	Croton-on-Hudson	7,606	873	266	228	89	92	198
	Dobbs Ferry	10,622	1,897	629	509	292	101	366
	Elmsford	4,619	1,482	660	478	159	54	131
	Hastings-on-Hudson	7,648	915	297	119	199	94	206
	Irvington	6,631	1,000	342	126	206	62	264
	Larchmont	6,485	1,064	547	109	113	37	258
	Mamaroneck	18,763	4,798	1,847	1,266	570	273	842
	Mount Kisco	9,983	3,116	1,565	759	253	175	364
	Ossining	24,010	7,311	3,744	1,959	834	262	512
	Pelham	6,404	951	221	259	199	90	182
	Pelham Manor	5,462	631	161	107	115	36	212
	Pleasantville	7,172	941	350	136	113	78	264
	Port Chester	27,867	11,535	6,003	3,140	1,027	551	814
	Rye Brook	8,613	1,143	522	120	130	58	313
	Scarsdale	17,823	3,216	1,474	586	468	176	512
	Sleepy Hollow	9,214	3,793	1,866	1,137	381	114	295
Tarrytown	11,090	2,468	1,183	555	321	83	326	
Tuckahoe	6,211	1,299	641	148	156	94	260	

Source: US Census Bureau. Prepared by the Westchester County Department of Planning.

Note: The Towns of Rye and Pelham are not included because there area is totally comprised of their incorporated villages.

The data for the Towns in the table do not include the data for their incorporated villages. The Towns of Bedford, Eastchester, Greenburgh, Mamaroneck, Mount Pleasant, and Ossing have incorporated villages.

## Foreign Born Population by Citizenship Status, 2000 Westchester County, NY

	Municipality	Total Population	Total Foreign Born				Foreign Born Entering in the 1990s			
			Total Foreign Born	Percent Foreign Born	Not a Citizen	Citizen	Total Entering in the 1990s	Percent Entered in the 1990s	Citizen	Not a Citizen
	Westchester County	923,459	205,429	22%	119,883	85,546	79,184	39%	8,130	71,054
	Cities	427,122	114,592	27%	68,136	46,456	44,229	39%	5,020	39,209
	Towns	279,486	39,521	14%	18,668	20,853	11,539	29%	1,303	10,236
	Villages	216,851	51,316	24%	33,079	18,237	23,416	46%	1,807	21,609
CITIES	Mount Vernon	68,381	19,882	29%	11,118	8,764	7,018	35%	1,063	5,955
	New Rochelle	72,182	19,722	27%	12,454	7,268	8,260	42%	818	7,442
	Peekskill	22,441	4,515	20%	3,241	1,274	2,516	56%	236	2,280
	Rye	14,955	3,214	21%	2,164	1,050	1,590	49%	78	1,512
	White Plains	53,077	15,572	29%	9,993	5,579	6,883	44%	568	6,315
	Yonkers	196,086	51,687	26%	29,166	22,521	17,962	35%	2,257	15,705
TOWNS	Bedford	18,133	2,300	13%	1,152	1,148	783	34%	90	693
	Cortlandt	28,672	3,337	12%	1,401	1,936	699	21%	89	610
	Eastchester	18,564	2,957	16%	1,474	1,483	937	32%	48	889
	Greenburgh	41,880	9,621	23%	5,113	4,508	3,418	36%	307	3,111
	Harrison	24,143	4,520	19%	2,532	1,988	1,875	41%	194	1,681
	Lewisboro	12,324	1,002	8%	532	470	353	35%	66	287
	Mamaroneck	11,130	2,029	18%	1,171	858	751	37%	71	680
	Mount Pleasant	26,223	3,046	12%	1,075	1,971	480	16%	82	398
	New Castle	17,491	1,970	11%	742	1,228	547	28%	121	426
	North Castle	10,849	1,383	13%	578	805	328	24%	67	261
	North Salem	5,173	521	10%	278	243	113	22%	11	102
	Ossining	5,514	656	12%	327	329	221	34%	-	221
	Pound Ridge	4,726	453	10%	210	243	87	19%	9	78
	Somers	18,346	1,921	10%	676	1,245	278	14%	48	230
Yorktown	36,318	3,805	10%	1,407	2,398	669	18%	100	569	
VILLAGES	Ardasley	4,274	812	19%	394	418	307	38%	10	297
	Briarcliff Manor	7,622	927	12%	381	546	246	27%	17	229
	Bronxville	6,543	983	15%	637	346	495	50%	5	490
	Buchanan	2,189	161	7%	91	70	50	31%	-	50
	Croton-on-Hudson	7,606	873	11%	466	407	266	30%	26	240
	Dobbs Ferry	10,622	1,897	18%	935	962	629	33%	76	553
	Elmsford	4,619	1,482	32%	952	530	660	45%	52	608
	Hastings-on-Hudson	7,648	915	12%	407	508	297	32%	57	240
	Irvington	6,631	1,000	15%	536	464	342	34%	39	303
	Larchmont	6,485	1,064	16%	690	374	547	51%	20	527
	Mamaroneck	18,763	4,798	26%	3,045	1,753	1,847	38%	110	1,737
	Mount Kisco	9,983	3,116	31%	1,943	1,173	1,565	50%	227	1,338
	Ossining	24,010	7,311	30%	5,281	2,030	3,744	51%	344	3,400
	Pelham	6,404	951	15%	447	504	221	23%	61	160
	Pelham Manor	5,462	631	12%	302	329	161	26%	-	161
	Pleasantville	7,172	941	13%	520	421	350	37%	19	331
	Port Chester	27,867	11,535	41%	8,485	3,050	6,003	52%	352	5,651
	Rye Brook	8,613	1,143	13%	659	484	522	46%	19	503
	Scarsdale	17,823	3,216	18%	1,898	1,318	1,474	46%	99	1,375
	Sleepy Hollow	9,214	3,793	41%	2,672	1,121	1,866	49%	172	1,694
Tarrytown	11,090	2,468	22%	1,488	980	1,183	48%	102	1,081	
Tuckahoe	6,211	1,299	21%	850	449	641	49%	-	641	

Source: US Census Bureau, 2000. Prepared by the Westchester County Department of Planning.

## Top Eight Ancestries Reported, 2000 Westchester County, NY

Municipality		Total Population	Total Ancestries tallied	Italian	Irish	German	English	Polish	Russian	West Indian	Jamaican	Other
Westchester County		923,459	996,626*	192,226	127,243	69,867	40,619	35,655	34,297	29,656	18,594	271,992
Cities		427,122	436,654	72,788	46,592	21,499	10,815	12,617	8,887	23,988	15,498	165,409
Towns		279,384	322,956	75,835	49,101	30,083	17,616	13,534	15,429	3,622	1,915	46,907
Villages		210,742	230,018	41,507	30,685	17,824	11,913	9,198	9,837	1,945	1,165	57,895
CITIES	Mount Vernon	68,381	65,217	7,076	2,768	1,648	759	929	468	11,360	8,419	31,606
	New Rochelle	72,182	74,504	14,404	6,413	3,806	1,841	2,345	2,472	3,552	1,657	25,272
	Peekskill	22,441	23,979	3,650	3,008	1,601	729	503	164	859	614	9,747
	Rye	14,955	17,511	2,704	3,077	1,547	1,629	483	439	73	23	2,567
	White Plains	53,077	56,099	8,047	6,113	3,675	1,979	1,913	2,194	1,726	963	20,413
	Yonkers	196,086	199,344	36,907	25,213	9,222	3,878	6,444	3,150	6,418	3,822	75,804
TOWNS	Bedford	18,133	20,005	3,464	3,025	2,084	2,056	811	1,008	62	43	2,740
	Cortlandt	28,672	34,856	8,062	6,879	3,672	1,579	1,564	1,033	515	237	4,290
	Eastchester	18,564	21,103	7,796	3,584	1,487	656	811	1,035	50	23	2,296
	Greenburgh	41,828	45,363	6,769	3,868	2,685	1,276	2,079	2,327	2,155	1,270	14,658
	Harrison	24,154	26,316	9,185	3,835	1,836	1,012	822	991	66	17	3,394
	Lewisboro	12,324	14,969	2,623	2,464	1,609	1,396	775	1,059	26	21	1,140
	Mamaroneck	11,141	13,299	2,016	1,740	1,141	870	742	1,220	13	13	1,701
	Mount Pleasant	26,151	28,160	9,089	4,716	2,962	1,243	840	730	129	66	3,199
	New Castle	17,491	19,534	2,525	2,217	1,524	1,317	1,105	1,939	71	19	3,172
	North Castle	10,849	12,616	2,915	1,656	1,109	871	544	695	46	-	1,542
	North Salem	5,173	6,427	1,300	1,385	842	454	155	160	32	32	539
	Ossining	5,514	6,531	1,296	1,059	752	403	204	265	128	12	820
	Pound Ridge	4,726	5,887	789	706	604	679	307	540	14	-	459
	Somers	18,346	22,817	5,599	3,775	3,037	1,491	898	949	42	15	1,859
Yorktown	36,318	45,073	12,407	8,192	4,739	2,313	1,877	1,478	273	147	5,098	
VILLAGES	Ardsley	4,269	4,760	907	642	356	221	319	302	22	22	1,082
	Briarcliff Manor	7,696	7,988	1,326	1,146	717	423	513	652	26	19	941
	Bronxville	6,543	7,960	952	1,740	917	872	231	123	22	-	817
	Buchanan	2,189	2,660	704	646	278	120	97	37	17	17	180
	Croton-on-Hudson	7,606	8,834	1,411	1,539	879	641	335	492	-	-	1,057
	Dobbs Ferry	10,622	11,795	2,277	1,756	885	596	514	667	136	39	2,170
	Elmsford	4,676	4,905	948	659	301	121	102	72	114	65	1,986
	Hastings-on-Hudson	7,648	9,326	1,276	1,455	932	689	615	727	97	25	1,157
	Irvington	6,631	7,675	1,206	1,332	730	443	542	513	-	-	1,184
	Larchmont	6,485	7,618	910	1,264	903	580	282	363	22	22	653
	Mamaroneck	18,752	20,525	5,354	2,346	1,298	813	687	741	187	124	4,878
	Mount Kisco	9,983	10,891	2,120	1,365	773	593	352	396	193	146	3,261
	Ossining	24,010	23,539	3,464	2,387	1,554	1,041	505	611	559	412	9,350
	Pelham	6,400	7,552	1,922	1,380	658	550	157	131	108	75	1,211
	Pelham Manor	5,466	6,745	1,615	1,196	710	632	207	154	48	48	694
	Pleasantville	7,172	8,712	1,971	1,863	817	614	377	266	47	26	932
	Port Chester	27,867	27,435	5,773	2,078	1,161	523	757	210	160	48	13,464
	Rye Brook	8,602	9,068	2,295	868	686	365	689	854	-	-	1,239
	Scarsdale	17,823	19,492	1,741	1,775	1,908	1,034	1,213	2,075	75	44	4,043
	Sleepy Hollow	9,212	10,002	1,224	1,203	530	401	185	71	54	20	4,239
	Tarrytown	11,090	12,536	2,111	2,045	831	641	519	380	58	13	3,357
Tuckahoe	6,211	6,998	2,096	865	461	275	306	144	101	16	1,781	

Source: US Census Bureau, 2000. Prepared by the Westchester County Department of Planning.

\*Note: Persons may report more than one ancestry. Approximately 73,000 Westchester residents reported more than one ancestry.

Data includes both the foreign and native born.